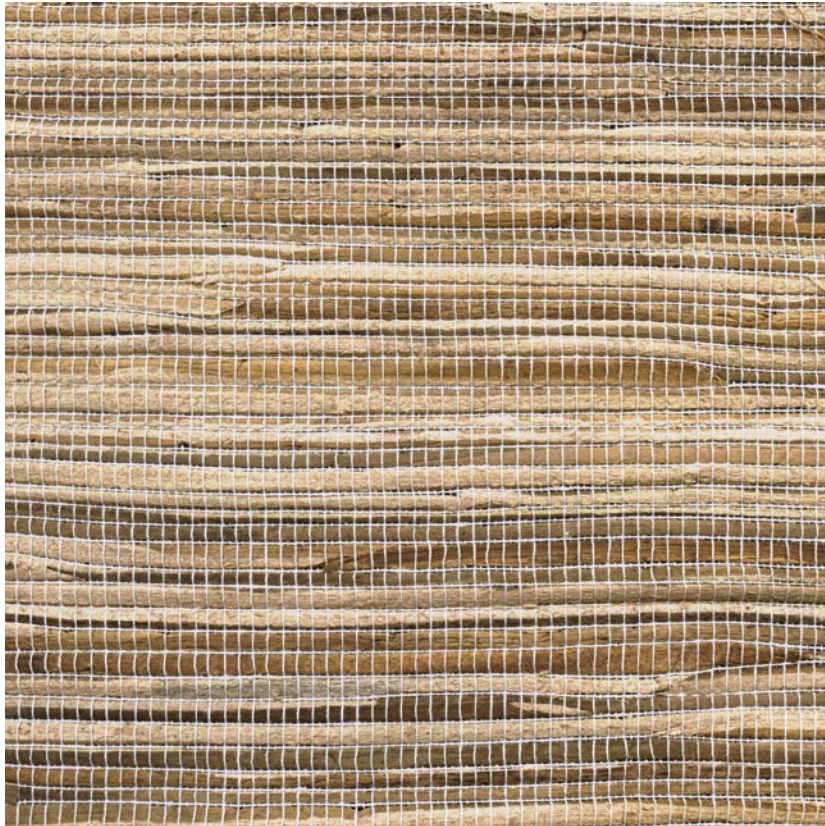


NAME

JACINTHE D'EAU
NATURELLE (E01)

REFERENCE

CMO FJA 01 I5



COLLECTION

Water hyacinth

USE

Blind, sliding panel

COLLECTION'S HISTORY

The water hyacinth collection is the result of a painstaking selection process. Characterized by its dense and substantial weft, this fiber offers a relaxing atmosphere with exceptional shades and weaves. Mixed with cotton, it is an invitation to rest and unwind.

REPEAT

Free match

WEIGHT

215 g (7.6 oz)

COMPOSITION

50% Hyacinth 50% Cotton

MAXIMUM PIECE LENGTH

20 m (787")

USEFUL WIDTH

Sold per meter width 115 cm (45")

CARE

Dry cleaning

REMARKS

Colors can vary from each production

PRODUCT COMMITMENTS

☞ Hand-woven

☞ 1 day to weave 1 m

☞ Natural fiber

LEARN MORE

[Visit the website](#)

BRAND COMMITMENTS

Our products support local crafting activities. We preserve unique know-how and help its transmission from one generation to the next. The plants offering their fibres are grown or harvested in harmony with their ecosystems.

CONTACT

CMO Paris
35 Rue de Bellechasse, 75007 Paris
01 40 20 45 98
contact@cmoparis.com
www.cmoparis.com