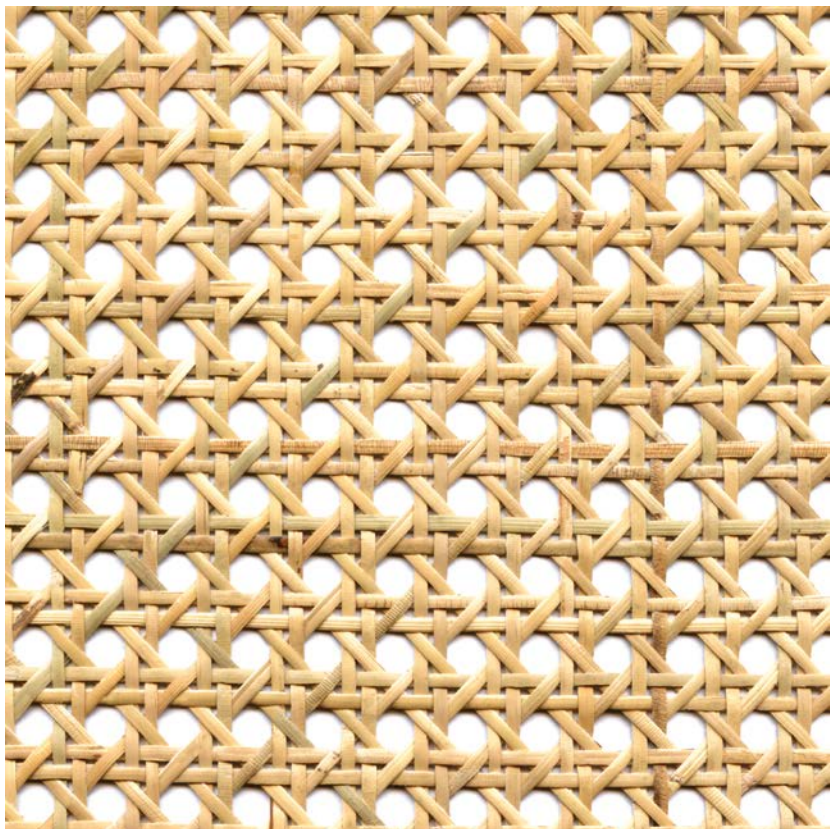


NAME

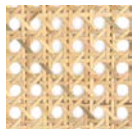
CANNAGE NATUREL

REFERENCE

CMO FRO 02 15



ALL AVAILABLE COLORS



CMO FRO 02 20

COLLECTION

Braided Palm tree

COLLECTION'S HISTORY

With true grace, the palm leaf deploys its authenticity in a variety of weaves. Whether in the form of buri, rattan or canework, each bears the trace of age-old gestures that have endured over time. With unparalleled and meticulous skill, guided by past generations, the artisan weaves harmonious paths through the humble coarseness of the palm leaf.

USEFUL WIDTH

Sold per meter, width 60 cm (23")

REMARKS

Colors can vary from each production

LEARN MORE

[Visit the website](#)

USE

Sliding panel, lampshade, furniture covering

REPEAT

Free match

WEIGHT

312 g (11 oz)

COMPOSITION

100% Rattan

MAXIMUM PIECE LENGTH

15 m (59'")

CARE

Brush

PRODUCT COMMITMENTS

- ☞ **Hand-woven**
- ☞ **1 day to weave 1 m**
- ☞ **Only the leaves are collected**

BRAND COMMITMENTS

Our products support local crafting activities. We preserve unique know-how and help its transmission from one generation to the next. The plants offering their fibres are grown or harvested in harmony with their ecosystems.

CONTACT

CMO Paris
35 Rue de Bellechasse, 75007 Paris
01 40 20 45 98
contact@cmoparis.com
www.cmoparis.com