

NAME

SISAL AMANDE

REFERENCE

CMO WSI 01 69



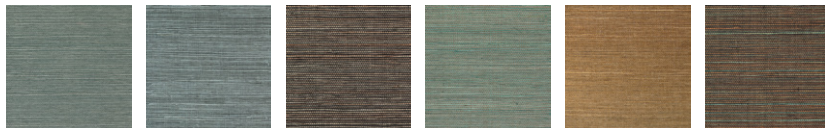
ALL AVAILABLE COLORS



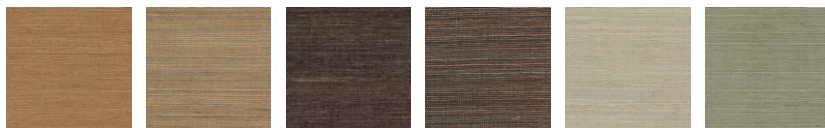
CMO WSI 01 02 CMO WSI 01 05 CMO WSI 01 10 CMO WSI 01 11 CMO WSI 01 12 CMO WSI 01 15



CMO WSI 01 17 CMO WSI 01 18 CMO WSI 01 19 CMO WSI 01 20 CMO WSI 01 22 CMO WSI 01 27



CMO WSI 01 42 CMO WSI 01 48 CMO WSI 01 49 CMO WSI 01 65 CMO WSI 01 70 CMO WSI 01 72



CMO WSI 01 74 CMO WSI 01 78 CMO WSI 01 80 CMO WSI 01 81 CMO WSI 01 86 CMO WSI 01 88

COLLECTION

Sisal wallcovering 2

USE

Wallcovering

COLLECTION'S HISTORY

The spotlight is on agave, with sisal fibre presented in unprecedented ways. By taking the form of vast marquetry work, opening up to pleating for the first time or adopting changing reflections, sisal is beautifully enhanced in unusual styles with nuanced mineral colours.

REPEAT

Free match

FIRE RATING

Euroclass B-s1, d0

WEIGHT

260 g (9,1 oz)

COMPOSITION

100% Sisal on non woven backing

USEFUL WIDTH

Sold per meter, width 90 cm (35")

VOC

A+

REMARKS

Colors can vary from each production

MAXIMUM PIECE LENGHT

25 m (984")

LEARN MORE

[Visit the website](#)

CARE

Avoid any contact with water, clean with a dry cloth

PRODUCT COMMITMENTS

- ✎ Hand-woven on a traditional loom
- ✎ Extremely resistant fiber
- ✎ Sisal reduces erosion

BRAND COMMITMENTS

Our products support local crafting activities. We preserve unique know-how and help its transmission from one generation to the next. The plants offering their fibres are grown or harvested in harmony with their ecosystems.

CONTACT

CMO Paris
35 Rue de Bellechasse, 75007 Paris
01 40 20 45 98
contact@cmoparis.com
www.cmoparis.com