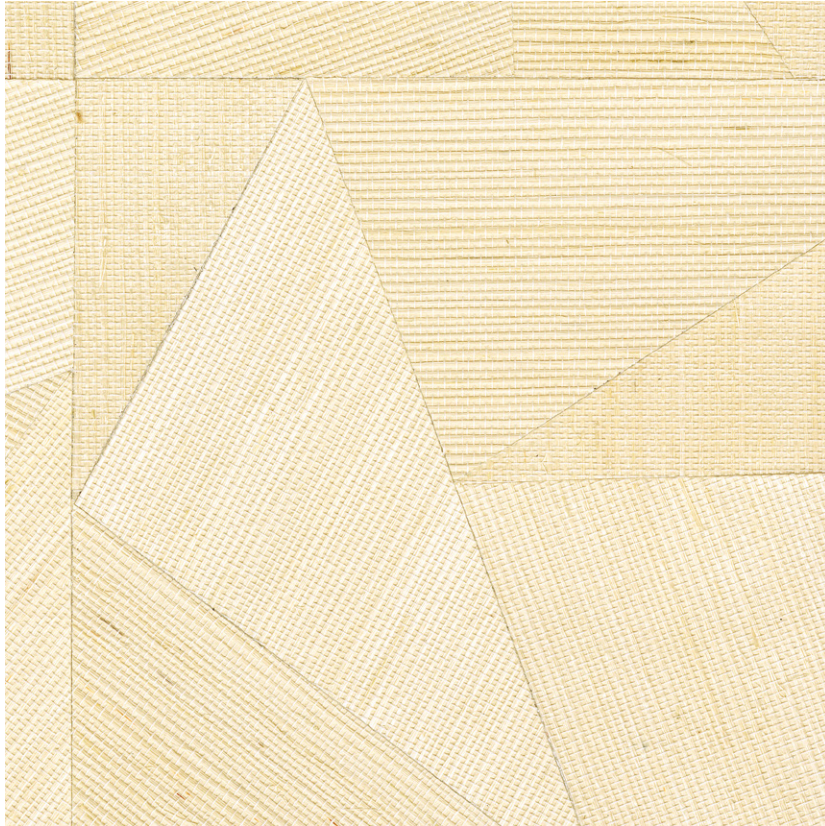


NAME

**SISAL ECLAT IVOIRE**

REFERENCE

**CMO WSI 05 02**



ALL AVAILABLE COLORS



CMO WSI 05 10

CMO WSI 05 20

CMO WSI 05 70

CMO WSI 05 80

COLLECTION

**Sisal wallcovering 2**

USE

**Wallcovering**

COLLECTION'S HISTORY

The spotlight is on agave, with sisal fibre presented in unprecedented ways. By taking the form of vast marquetry work, opening up to pleating for the first time or adopting changing reflections, sisal is beautifully enhanced in unusual styles with nuanced mineral colours.

REPEAT

**15 cm (5,9")**

FIRE RATING

**Certificate on demand**

WEIGHT

**450 g (15,9 oz)**

COMPOSITION

**100% Sisal on non woven backing**

USEFUL WIDTH

**Sold per meter, width 90 cm (35")**

VOC

**A+**

REMARKS

**Colors can vary from each production**

MAXIMUM PIECE LENGHT

**25 m (984")**

LEARN MORE

[Visit the website](#)

CARE

**Avoid any contact with water, clean with a dry cloth**

PRODUCT COMMITMENTS

- ✎ Hand-woven on a traditional loom
- ✎ Extremely resistant fiber
- ✎ Sisal reduces erosion

BRAND COMMITMENTS

Our products support local crafting activities. We preserve unique know-how and help its transmission from one generation to the next. The plants offering their fibres are grown or harvested in harmony with their ecosystems.

CONTACT

CMO Paris  
35 Rue de Bellechasse, 75007 Paris  
01 40 20 45 98  
contact@cmoparis.com  
www.cmoparis.com