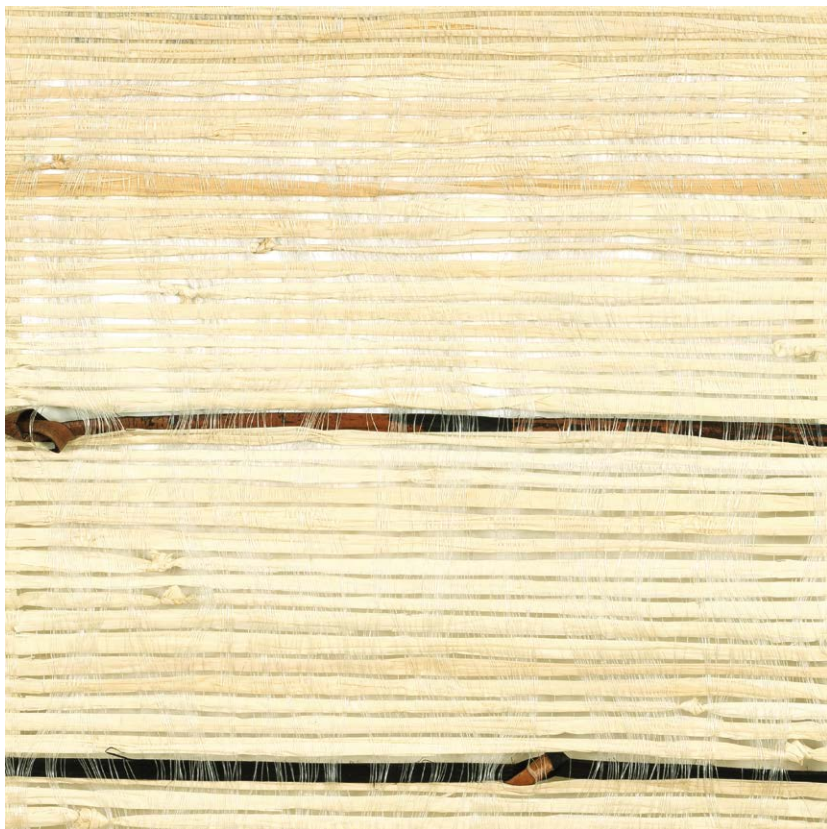


NAME

RAPHIA ROTIN NATUREL

REFERENCE

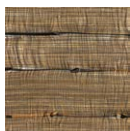
CMO FRA 10 01



ALL AVAILABLE COLORS



CMO FRA 10 10



CMO FRA 10 70

COLLECTION

Mixed raffia

USE

Blind, sliding panel, lampshade

COLLECTION'S HISTORY

In its simplest form, raffia spins its authenticity by embracing other fabulous materials : silk, rattan, buri or abaca. In the fanciful stripes that are born from these unions, we encounter patterns, small bows, openwork lines. The craftsman was left to determine every detail, meticulously crafting his incredible weave.

REPEAT

Free match

WEIGHT

345 g (12.2 oz)

COMPOSITION

75% Raffia 17% Rattan 8% Silk

MAXIMUM PIECE LENGTH

50 m (166'9")

USEFUL WIDTH

Sold per meter, width 140 cm (55")

CARE

Vacuum cleaner

REMARKS

Colors can vary from each production

PRODUCT COMMITMENTS

☞ Hand-woven

☞ 1 day to weave 1 m

☞ Natural fiber

LEARN MORE

[Visit the website](#)

BRAND COMMITMENTS

Our products support local crafting activities. We preserve unique know-how and help its transmission from one generation to the next. The plants offering their fibres are grown or harvested in harmony with their ecosystems.

CONTACT

CMO Paris

35 Rue de Bellechasse, 75007 Paris

01 40 20 45 98

contact@cmoparis.com

www.cmoparis.com