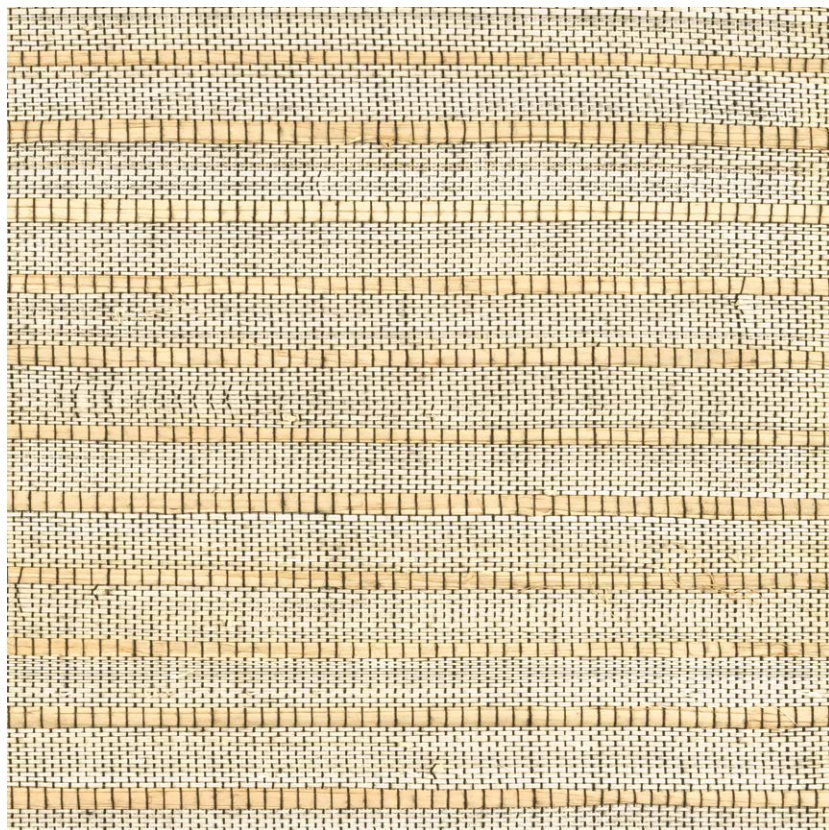


NAME

RAPHIA ABACA GRIS

REFERENCE

CMO FRA II 86



ALL AVAILABLE COLORS



CMO FRA II 01

CMO FRA II 10

CMO FRA II 80

COLLECTION

Mixed raffia

USE

Blind, sliding panel, lampshade

COLLECTION'S HISTORY

In its simplest form, raffia spins its authenticity by embracing other fabulous materials : silk, rattan, buri or abaca. In the fanciful stripes that are born from these unions, we encounter patterns, small bows, openwork lines. The craftsman was left to determine every detail, meticulously crafting his incredible weave.

REPEAT

Free match

WEIGHT

157 g (5.5 oz)

COMPOSITION

36% Raffia 37% Abaca 27% PL

MAXIMUM PIECE LENGTH

21 m (827")

CARE

Vacuum cleaner

USEFUL WIDTH

Sold per meter, width 140 cm (55")

REMARKS

Colors can vary from each production

PRODUCT COMMITMENTS

☞ Hand-woven

☞ 1 day to weave 1 m

☞ Natural fiber

LEARN MORE

[Visit the website](#)

BRAND COMMITMENTS

Our products support local crafting activities. We preserve unique know-how and help its transmission from one generation to the next. The plants offering their fibres are grown or harvested in harmony with their ecosystems.

CONTACT

CMO Paris

35 Rue de Bellechasse, 75007 Paris

01 40 20 45 98

contact@cmoparis.com

www.cmoparis.com