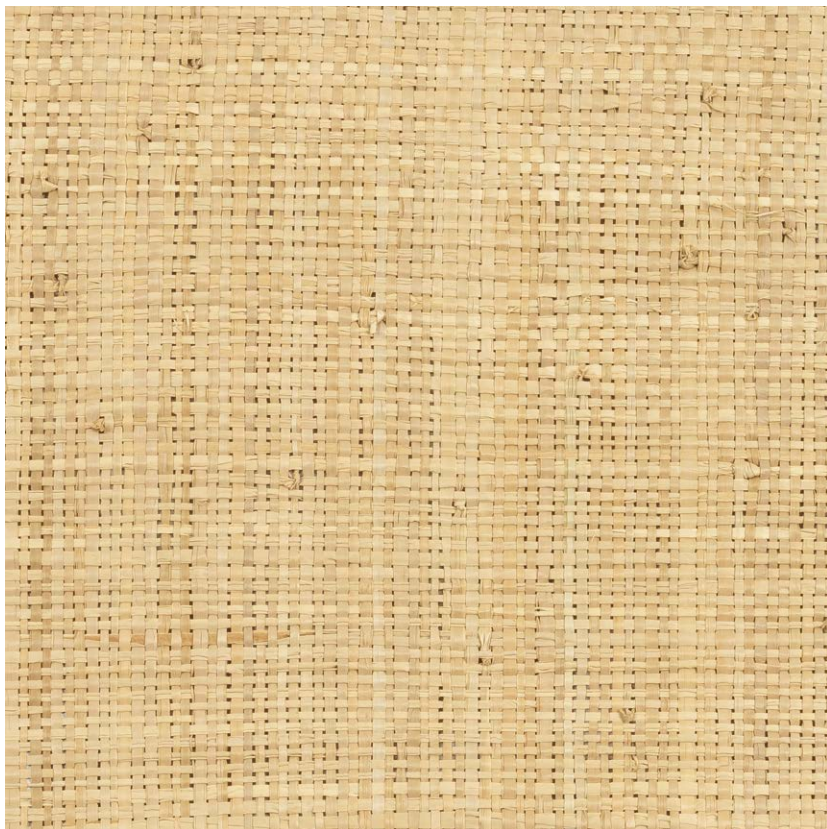


NAME

RAPHIA NATUREL SABLE

REFERENCE

CMO FRA 17 10



COLLECTION

Raffia 2

COLLECTION'S HISTORY

Raffia is the one and only star in these creations. The opportunity for it to reveal its grace through infinite facets by playing with methods. Here it is braided, knotted, woven to invent the most original patterns: tortoiseshell, diamond, openwork checked, gem... By preserving these artisanal techniques, the master crafts-man reminds us that he is above all a creator.

USEFUL WIDTH

Sold per meter, width 90 cm (35")

REMARKS

Colors can vary from each production

LEARN MORE

[Visit the website](#)

USE

Blinds, sliding panel, upholstery, lampshade, cushion

REPEAT

Free match

WEIGHT

220 g (7.8 oz)

COMPOSITION

100% Raffia




MAXIMUM PIECE LENGTH

7 m (276")

CARE

Dry cleaning

PRODUCT COMMITMENTS

-  **Hand-woven**
-  **1 day to weave 1 m**
-  **Extracting the fiber helps regenerate palm forests**

BRAND COMMITMENTS

Our products support local crafting activities. We preserve unique know-how and help its transmission from one generation to the next. The plants offering their fibres are grown or harvested in harmony with their ecosystems.

CONTACT

**CMO Paris
35 Rue de Bellechasse, 75007 Paris
01 40 20 45 98
contact@cmoparis.com
www.cmoparis.com**