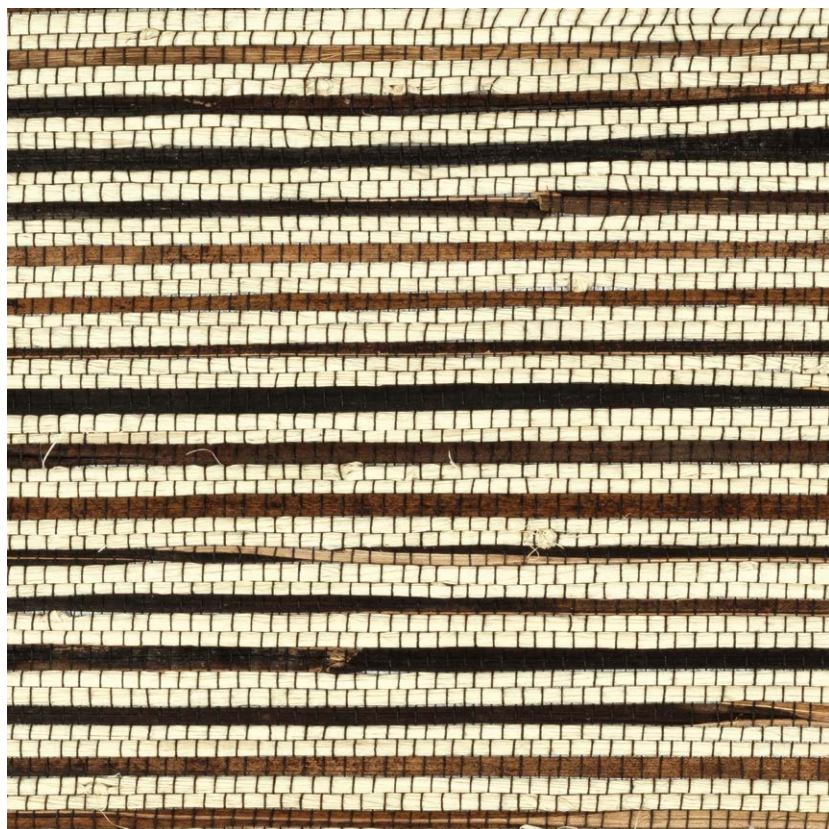


NAME

**RAPHIA RAYURE  
ABACA NOIR**

REFERENCE

**CMO FRA I9 80**



COLLECTION

Mixed raffia

COLLECTION'S HISTORY

In its simplest form, raffia spins its authenticity by embracing other fabulous materials : silk, rattan, buri or abaca. In the fanciful stripes that are born from these unions, we encounter patterns, small bows, openwork lines. The craftsman was left to determine every detail, meticulously crafting his incredible weave.

USEFUL WIDTH

Sold per meter, width 90 cm (35")

REMARKS

Colors can vary from each production

LEARN MORE

[Visit the website](#)

USE

Blind, sliding panel, lampshade

REPEAT

Free match

WEIGHT

360 g (12.7 oz)

COMPOSITION

50% Raffia 50% Abaca

MAXIMUM PIECE LENGTH

7 m (276")

CARE

Vacuum cleaner

PRODUCT COMMITMENTS

☞ Hand-woven

☞ 1 day to weave 1 m

☞ Natural fiber

BRAND COMMITMENTS

Our products support local crafting activities. We preserve unique know-how and help its transmission from one generation to the next. The plants offering their fibres are grown or harvested in harmony with their ecosystems.

CONTACT

CMO Paris

35 Rue de Bellechasse, 75007 Paris

01 40 20 45 98

[contact@cmoparis.com](mailto:contact@cmoparis.com)

[www.cmoparis.com](http://www.cmoparis.com)