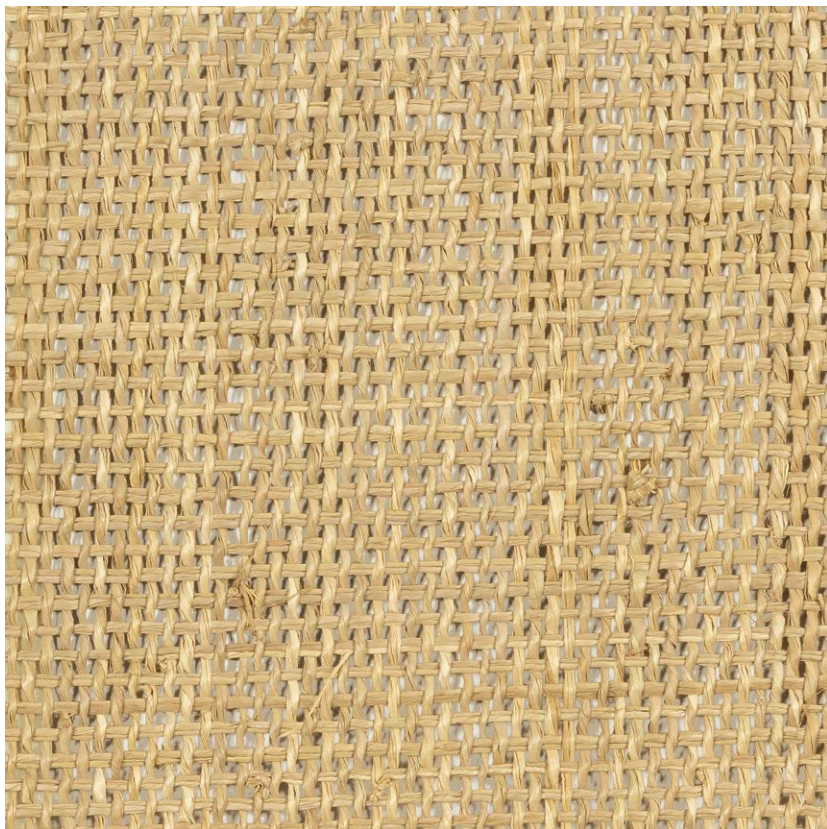


NAME

**RAPHIA AJOURÉ NATUREL**

REFERENCE

**CMO FRA 22 10**



ALL AVAILABLE COLORS



CMO FRA 22 80

COLLECTION

**Raffia 2**

COLLECTION'S HISTORY

**Raffia is the one and only star in these creations. The opportunity for it to reveal its grace through infinite facets by playing with methods. Here it is braided, knotted, woven to invent the most original patterns: tortoiseshell, diamond, openwork checked, gem... By preserving these artisanal techniques, the master crafts-man reminds us that he is above all a creator.**

USEFUL WIDTH

**Sold per meter, width 60 cm (23")**

REMARKS

**Colors can vary from each production**

LEARN MORE

**[Visit the website](#)**

USE

**Blinds, sliding panel, upholstery, lampshade, cushion**

REPEAT

**Free match**

WEIGHT

**280 g (9.9 oz)**

COMPOSITION

**100% Raffia**




MAXIMUM PIECE LENGTH

**7 m (276")**

CARE

**Dry cleaning**

PRODUCT COMMITMENTS

-  **Hand-woven**
-  **1 day to weave 1 m**
-  **Extracting the fiber helps regenerate palm forests**

BRAND COMMITMENTS

**Our products support local crafting activities. We preserve unique know-how and help its transmission from one generation to the next. The plants offering their fibres are grown or harvested in harmony with their ecosystems.**

CONTACT

**CMO Paris  
35 Rue de Bellechasse, 75007 Paris  
01 40 20 45 98  
contact@cmoparis.com  
www.cmoparis.com**