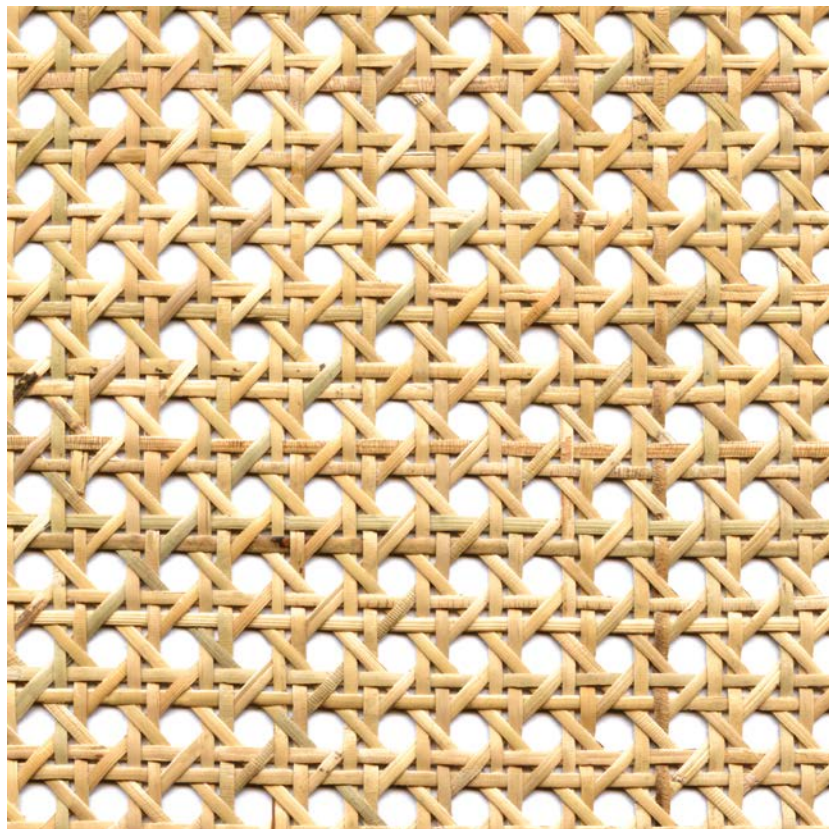


NAME

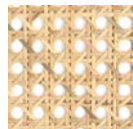
**CANNAGE NATUREL**

REFERENCE

**CMO FRO 02 15**



ALL AVAILABLE COLORS



CMO FRO 02 20

COLLECTION

**Braided Palm tree**

COLLECTION'S HISTORY

With true grace, the palm leaf deploys its authenticity in a variety of weaves. Whether in the form of buri, rattan or canework, each bears the trace of age-old gestures that have endured over time. With unparalleled and meticulous skill, guided by past generations, the artisan weaves harmonious paths through the humble coarseness of the palm leaf.

USEFUL WIDTH

**Sold per meter, width 60 cm (23")**

REMARKS

Colors can vary from each production

LEARN MORE

[Visit the website](#)

USE

**Sliding wall, lampshade, furniture covering**

REPEAT

**Free match**

WEIGHT

**312 g (11 oz)**

COMPOSITION

**100% Rattan**

MAXIMUM PIECE LENGTH

**15 m (59'")**

CARE

**Brush**

PRODUCT COMMITMENTS

- ☞ Hand-woven
- ☞ 1 day to weave 1 m
- ☞ Only the leaves are collected

BRAND COMMITMENTS

Our products support local crafting activities. We preserve unique know-how and help its transmission from one generation to the next. The plants offering their fibres are grown or harvested in harmony with their ecosystems.

CONTACT

CMO Paris  
35 Rue de Bellechasse, 75007 Paris  
01 40 20 45 98  
contact@cmoparis.com  
www.cmoparis.com