

NAME

FEUILLES DE BANANIER LAVE

REFERENCE

CMO WBA 01 30



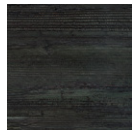
ALL AVAILABLE COLORS



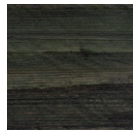
CMO WBA 01 10



CMO WBA 01 20



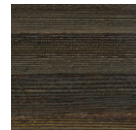
CMO WBA 01 49



CMO WBA 01 68



CMO WBA 01 70



CMO WBA 01 72



CMO WBA 01 92

COLLECTION

Banana Leaves wallcovering

USE

Wallcovering

COLLECTION'S HISTORY

We praise the admirable patience of the craftsman who let banana fibres reveal themselves through this textured wallcovering. Colours are those of the natural world: lava, gold, earth or spices.

REPEAT

Free match

FIRE RATING

Euroclass B-sl, d0

WEIGHT

600 g (21.2 oz)

USEFUL WIDTH

Sold per meter, width 90 cm (35")

COMPOSITION

100% Banana Leaf on non woven backing

REMARKS

Colors can vary from each production

VOC

A+

LEARN MORE

[Visit the website](#)

MAXIMUM PIECE LENGTH

25 m (984")

CARE

Avoid any contact with water, clean with a dry cloth

PRODUCT COMMITMENTS

- 🌿 Hand-woven on a traditional loom
- 🌿 1 day to make 1 m
- 🌿 No deforestation as only the leaves are harvested

BRAND COMMITMENTS

Our products support local crafting activities. We preserve unique know-how and help its transmission from one generation to the next. The plants offering their fibres are grown or harvested in harmony with their ecosystems.

CONTACT

CMO Paris
35 Rue de Bellechasse, 75007 Paris
01 40 20 45 98
contact@cmoparis.com
www.cmoparis.com