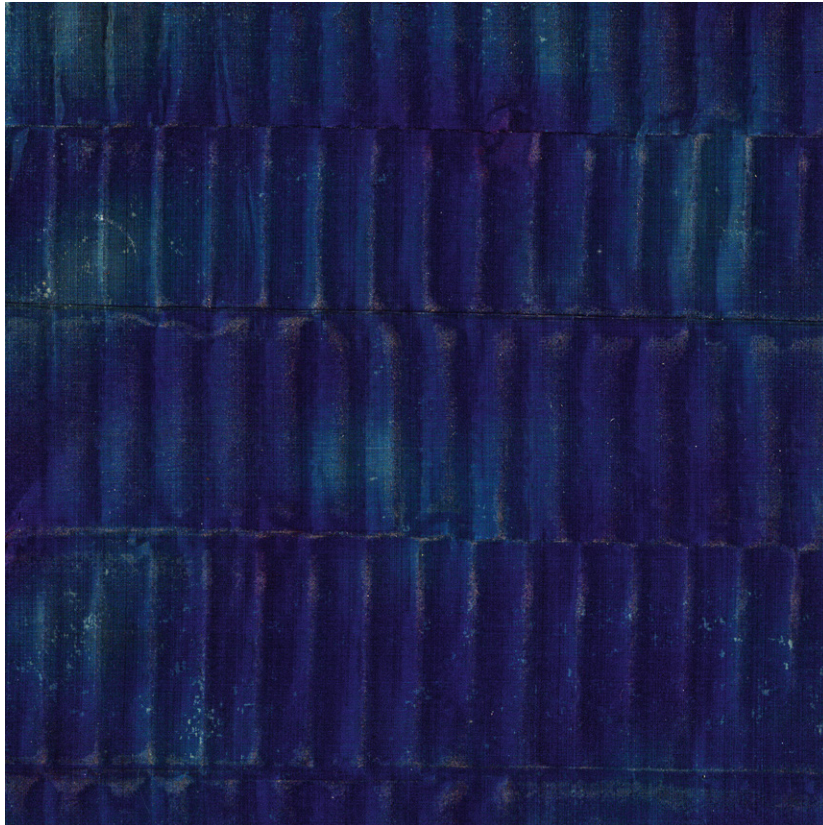


NAME

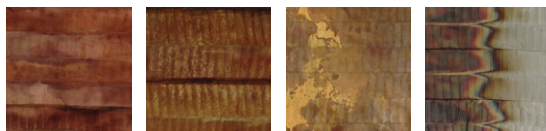
HURRICANE ENCRE

REFERENCE

CMO WME 01 49



ALL AVAILABLE COLORS



CMO WME 01 70

CMO WME 01 90

CMO WME 01 92

CMO WME 01 95

COLLECTION

Hurricane

USE

Wallcovering

COLLECTION'S HISTORY

Hand-sculpted gesso creates fabulous crackle effects, stripes, fine ridges and a combed design, beautifully enhanced by flashes of gold, silver, copper and bronze. These genuine mineral sculptures present a unique range of options born of the hand of an artisan turned artist.

REPEAT

Free match

FIRE RATING

Euroclass B-s1, d0

WEIGHT

500 g (17.6 oz)

COMPOSITION

100% Brass on non woven textile backing

USEFUL WIDTH

Sold per meter, width 91,4 cm (36")

VOC

A

REMARKS

Colors can vary from each production

MAXIMUM PIECE LENGHT

9 m (354")

LEARN MORE

[Visit the website](#)

CARE

Avoid any contact with water,  
clean with a dry cloth

PRODUCT COMMITMENTS

- 🌿 Hand-pleated metal
- 🌿 1 day to make 1 m
- 🌿 Artisanal product

BRAND COMMITMENTS

Our products support local crafting activities. We preserve unique know-how and help its transmission from one generation to the next. The plants offering their fibres are grown or harvested in harmony with their ecosystems.

CONTACT

CMO Paris  
35 Rue de Bellechasse, 75007 Paris  
01 40 20 45 98  
contact@cmoparis.com  
www.cmoparis.com