

NAME

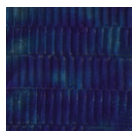
HURRICANE CUIVRE

REFERENCE

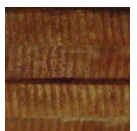
CMO WME 01 70



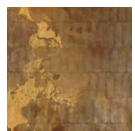
ALL AVAILABLE COLORS



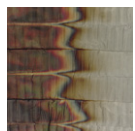
CMO WME 01 49



CMO WME 01 90



CMO WME 01 92



CMO WME 01 95

COLLECTION

Hurricane

COLLECTION'S HISTORY

Hand-sculpted gesso creates fabulous crackle effects, stripes, fine ridges and a combed design, beautifully enhanced by flashes of gold, silver, copper and bronze. These genuine mineral sculptures present a unique range of options born of the hand of an artisan turned artist.

USEFUL WIDTH

Sold per meter, width 91,4 cm (36")

REMARKS

Colors can vary from each production

LEARN MORE

[Visit the website](#)

USE

Wallcovering

REPEAT

Free match

FIRE RATING

Euroclass B-s1, d0

WEIGHT

500 g (17.6 oz)

COMPOSITION

100% Brass on non woven textile backing

VOC

A

MAXIMUM PIECE LENGHT

9 m (354")

CARE

Avoid any contact with water, clean with a dry cloth

PRODUCT COMMITMENTS

- ✦ Hand-pleated metal
- ✦ 1 day to make 1 m
- ✦ Artisanal product

BRAND COMMITMENTS

Our products support local crafting activities. We preserve unique know-how and help its transmission from one generation to the next. The plants offering their fibres are grown or harvested in harmony with their ecosystems.

CONTACT

CMO Paris
35 Rue de Bellechasse, 75007 Paris
01 40 20 45 98
contact@cmoparis.com
www.cmoparis.com