

NAME

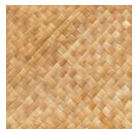
**BURI BICOLORE
NATUREL - HAVANE (E01 - M05)**

REFERENCE

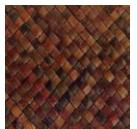
CMO WPA 04 71



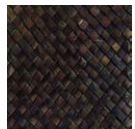
ALL AVAILABLE COLORS



CMO WPA 04 70



CMO WPA 04 75



CMO WPA 04 80

COLLECTION

Braided Palm tree

COLLECTION'S HISTORY

With true grace, the palm leaf deploys its authenticity in a variety of weaves. Whether in the form of buri, rattan or canework, each bears the trace of age-old gestures that have endured over time. With unparalleled and meticulous skill, guided by past generations, the artisan weaves harmonious paths through the humble coarseness of the palm leaf.

USEFUL WIDTH

Panel 50 x 600 cm (19"x236.2")

REMARKS

**Sold per panel 50 x 600 cm (19"x236.2")
Colors can vary from each production**

LEARN MORE

[Visit the website](#)

USE

Furniture covering, lampshade

REPEAT

Free match

WEIGHT

200 g (7,05 oz)

COMPOSITION

100% Palm leaf

MAXIMUM PIECE LENGHT

50 x 600 cm (19"x236.2")

CARE

Dry cleaning

PRODUCT COMMITMENTS

- ☞ Hand-woven
- ☞ 1 day to weave 1 m
- ☞ Only the leaves are collected

BRAND COMMITMENTS

Our products support local crafting activities. We preserve unique know-how and help its transmission from one generation to the next. The plants offering their fibres are grown or harvested in harmony with their ecosystems.

CONTACT

**CMO Paris
35 Rue de Bellechasse, 75007 Paris
01 40 20 45 98
contact@cmoparis.com
www.cmoparis.com**