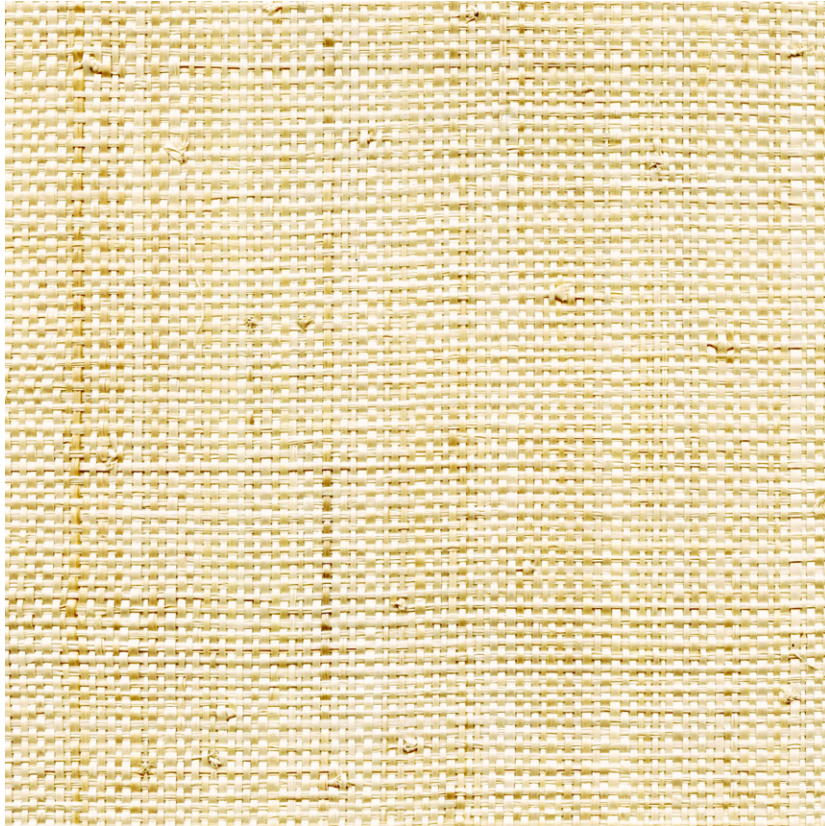


NAME

**RAPHIA NATUREL ÉCRU**

REFERENCE

**CMO WRA 03 01**



COLLECTION

**Raffia 2**

COLLECTION'S HISTORY

Raffia has achieved a new handicraft feat : it has embodied 3 dimensions. Thus it presents itself crafted in two ways, in a creation which doubles its natural beauty with true creative originality. With its pompoms placed randomly by the craftsman, sometimes even tinted manually in tie-dye, it is adorned with lightness. Also used for the backing, raffia gives the evanescent dance of the pompoms a rawer base, with an irregularity that gives all its soul to the weave. At its side, the craftsman offers a series that awakens the raffia weft with a brushstroke on the fly.

USEFUL WIDTH

**Sold per meter, width 90 cm (35")**

REMARKS

**Colors can vary from each production**

LEARN MORE

[Visit the website](#)

USE

**Wallcovering**

REPEAT

**Free match**

FIRE RATING

**Euroclass B-s1, d0**

WEIGHT

**300 g (10.6 oz)**

COMPOSITION

**100% Raffia on non woven backing**

VOC

**A+**

MAXIMUM PIECE LENGHT

**30 m (1181")**

CARE

**Avoid any contact with water, clean with a dry cloth**

PRODUCT COMMITMENTS

- 🌿 Hand-woven on a traditional loom
- 🌿 1 day to make 1 m
- 🌿 No deforestation as only the leaves are harvested

BRAND COMMITMENTS

Our products support local crafting activities. We preserve unique know-how and help its transmission from one generation to the next. The plants offering their fibres are grown or harvested in harmony with their ecosystems.

CONTACT

CMO Paris  
35 Rue de Bellechasse, 75007 Paris  
01 40 20 45 98  
contact@cmoparis.com  
www.cmoparis.com

