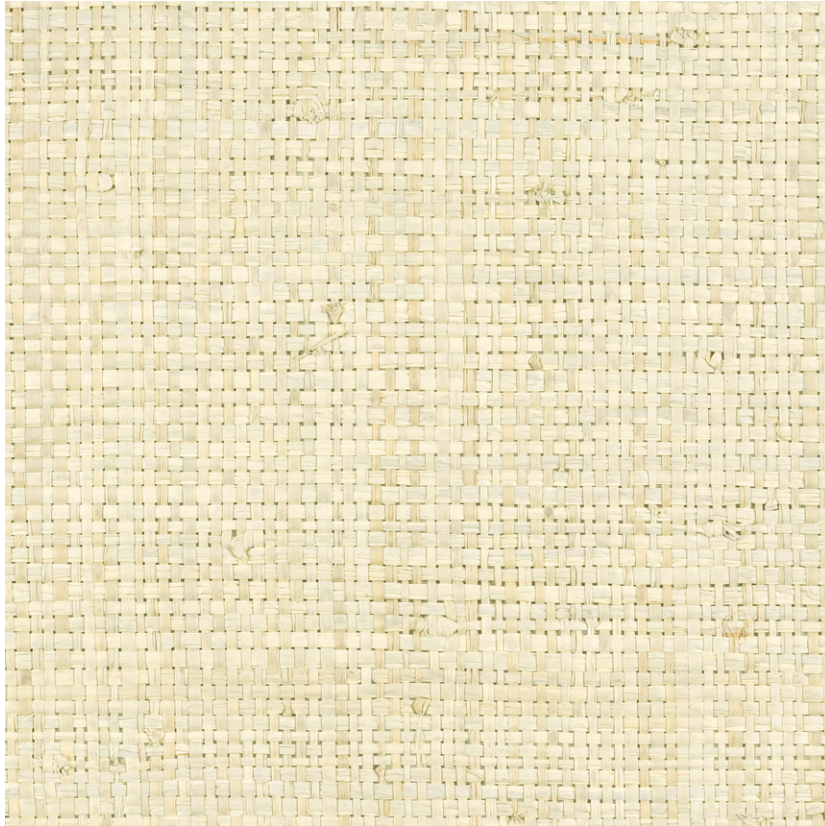


NAME

**RAPHIA PUR POLAIRE**

REFERENCE

**CMO WRA 05 88**



ALL AVAILABLE COLORS



CMO WRA 05 01

CMO WRA 05 20

CMO WRA 05 21

CMO WRA 05 75

COLLECTION

**Raffia 2**

COLLECTION'S HISTORY

**Raffia has achieved a new handicraft feat : it has embodied 3 dimensions. Thus it presents itself crafted in two ways, in a creation which doubles its natural beauty with true creative originality. With its pompons placed randomly by the craftsman, sometimes even tinted manually in tie-dye, it is adorned with lightness. Also used for the backing, raffia gives the evanescent dance of the pompons a rawer base, with an irregularity that gives all its soul to the weave. At its side, the craftsman offers a series that awakens the raffia weft with a brushstroke on the fly.**

USEFUL WIDTH

**Sold per meter, width 90 cm (35")**

REMARKS

**Colors can vary from each production**

LEARN MORE

**[Visit the website](#)**

USE

**Wallcovering**

REPEAT

**Free match**

FIRE RATING

**Euroclass B-s1, d0**

WEIGHT

**288 g (10.2 oz)**

COMPOSITION

**100% Raffia on non woven backing**

VOC

**On demand**

MAXIMUM PIECE LENGHT

**30 m (118ft)**

CARE

**Avoid any contact with water, clean with a dry cloth**

PRODUCT COMMITMENTS

- 🌿 Hand-woven on a traditional loom**
- 🌿 1 day to make 1 m**
- 🌿 No deforestation as only the leaves are harvested**

BRAND COMMITMENTS

**Our products support local crafting activities. We preserve unique know-how and help its transmission from one generation to the next. The plants offering their fibres are grown or harvested in harmony with their ecosystems.**

CONTACT

**CMO Paris  
35 Rue de Bellechasse, 75007 Paris  
01 40 20 45 98  
contact@cmoparis.com  
www.cmoparis.com**