

NAME

RAMIE ARGENT

REFERENCE

CMO WRM 01 95



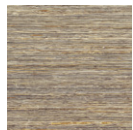
ALL AVAILABLE COLORS



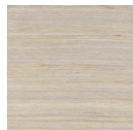
CMO WRM 01 01



CMO WRM 01 15



CMO WRM 01 80



CMO WRM 01 85



CMO WRM 01 90

COLLECTION

Ramie

USE

Wallcovering

COLLECTION'S HISTORY

Elegance. Sophistication. Nonetheless, white nettle is incredibly resistant. It's the craftsman's complex know-how that converts its force into finesse, offering very natural matt effects where the sobriety of the fiber, intermittently animated by metallic effects, prevails.

REPEAT

Free match

FIRE RATING

Certificate on demand

WEIGHT

250 g (8.8 oz)

COMPOSITION

100% Ramie on non woven backing

USEFUL WIDTH

Sold per meter, width 90 cm (35")

VOC

On demand

REMARKS

Colors can vary from each production

MAXIMUM PIECE LENGHT

25 m (984")

LEARN MORE

[Visit the website](#)

CARE

Avoid any contact with water, clean with a dry cloth

PRODUCT COMMITMENTS

- 🌿 Woven on a hand loom
- 🌿 1 day to create 1 m
- 🌿 Low-water consumption crop

BRAND COMMITMENTS

Our products support local crafting activities. We preserve unique know-how and help its transmission from one generation to the next. The plants offering their fibres are grown or harvested in harmony with their ecosystems.

CONTACT

CMO Paris
35 Rue de Bellechasse, 75007 Paris
01 40 20 45 98
contact@cmoparis.com
www.cmoparis.com