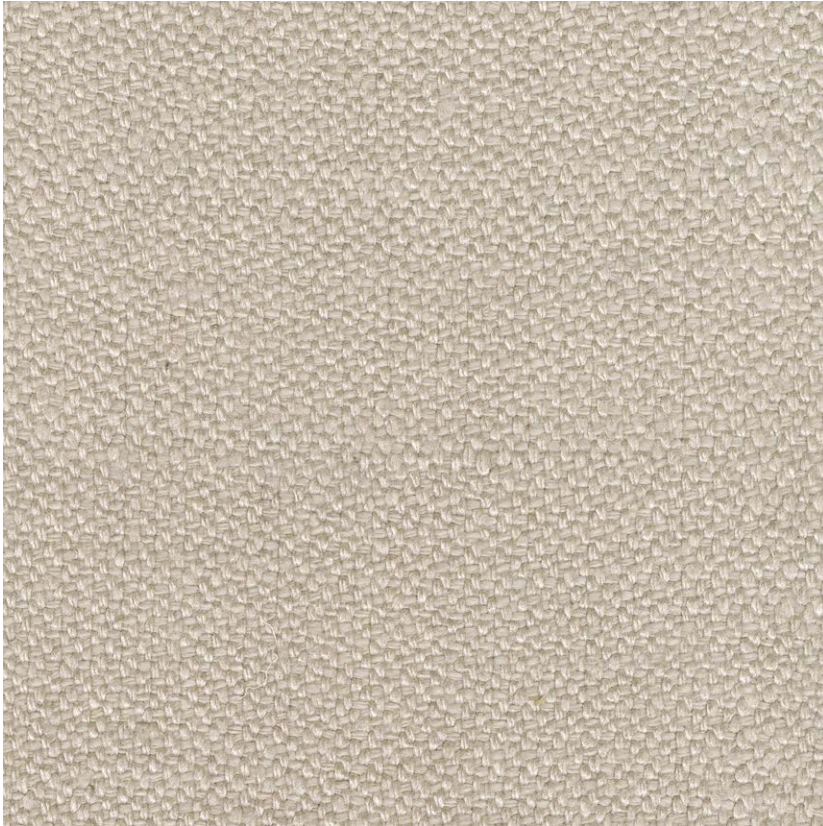


NAME

**BANANE NATTÉE PERLE**

REFERENCE

**CMO FBA 03 88**



ALL AVAILABLE COLORS



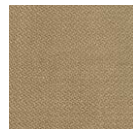
CMO FBA 03 01



CMO FBA 03 70



CMO FBA 03 81



CMO FBA 03 90

COLLECTION

**Evasion 2**

COLLECTION'S HISTORY

Unprecedentedly pure fibers – among the finest materials in the world – worked by highly skilled artisans: this is the promise of the collection, which gives unprecedented scope to silk, cashmere, linen, abaca, etc. When the delicacy of these materials reaches its peak, sumptuous gradations, sheer detailing, an exceptional hand and otherworldly draping imbued with the breath of nature are revealed.

USEFUL WIDTH

Sold per meter, width 140 cm (55")

REMARKS

**Made to order**

Colors can vary from each production

LEARN MORE

[Visit the website](#)

USE

Blind, curtain, upholstery

REPEAT

**Free match**

MARTINDALE

**35 000**

WEIGHT

**750 g (26.5 oz)**

COMPOSITION

**100% Banana**

MAXIMUM PIECE LENGTH

**12 m (472")**

CARE

Handwash cold water and dry under roof or shadow (no direct sunlight)

PRODUCT COMMITMENTS

🌿 Noble fiber

🌿 Unrivalled softness

🌿 Haute couture

BRAND COMMITMENTS

Our products support local crafting activities. We preserve unique know-how and help its transmission from one generation to the next. The plants offering their fibres are grown or harvested in harmony with their ecosystems.

CONTACT

CMO Paris

35 Rue de Bellechasse, 75007 Paris

01 40 20 45 98

[contact@cmoparis.com](mailto:contact@cmoparis.com)

[www.cmoparis.com](http://www.cmoparis.com)