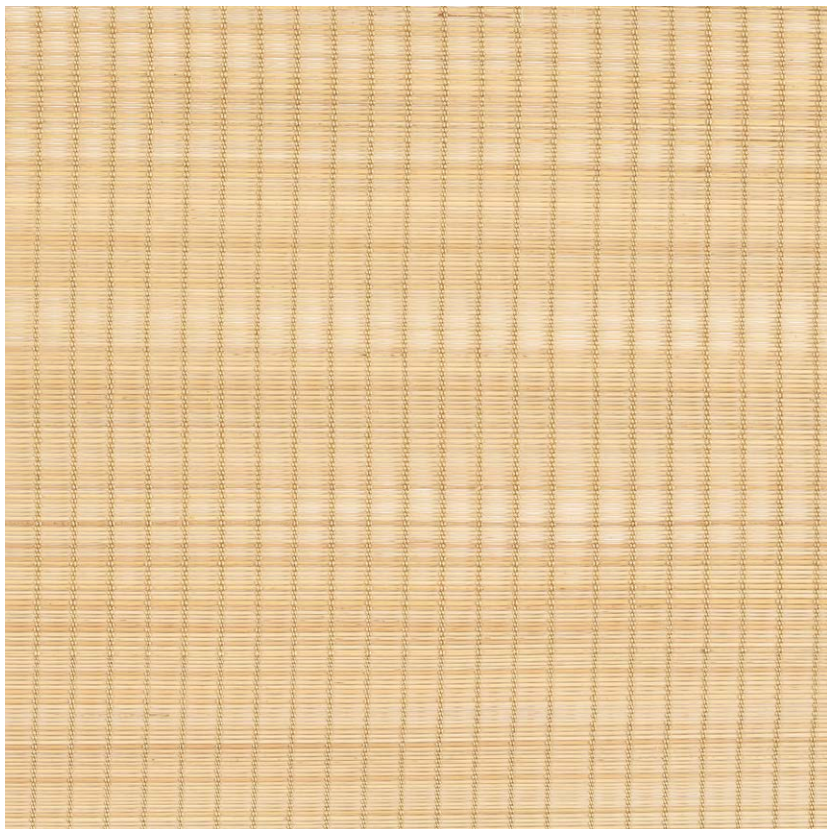


NAME

PALMIER FINE RAYURE NATUREL

REFERENCE

CMO FBU 06 10



COLLECTION

Palm tree 2

USE

Blind, sliding wall

COLLECTION'S HISTORY

Palm expresses its authenticity through visual weavings: here it is striped, mottled, twilled ... Crafted on traditional looms, its natural element is that of timelessness and delicacy. The craftsman reveals its purity and finesse while simultaneously taking unique advantage of light to bring real depth to the piece.

REPEAT

Free match

WEIGHT

125 g (4.4 oz)

COMPOSITION

90% Buntal 10% Polyester

MAXIMUM PIECE LENGTH

20 m (787")

USEFUL WIDTH

Sold per meter, width 90 cm (35")

CARE


Vacuum cleaner


REMARKS

Colors can vary from each production

PRODUCT COMMITMENTS

 **Hand-woven**

 **1 day to weave 1 m**

 **Only the leaves are collected**

LEARN MORE

[Visit the website](#)

BRAND COMMITMENTS

Our products support local crafting activities. We preserve unique know-how and help its transmission from one generation to the next. The plants offering their fibres are grown or harvested in harmony with their ecosystems.

CONTACT

**CMO Paris
35 Rue de Bellechasse, 75007 Paris
01 40 20 45 98
contact@cmoparis.com
www.cmoparis.com**

