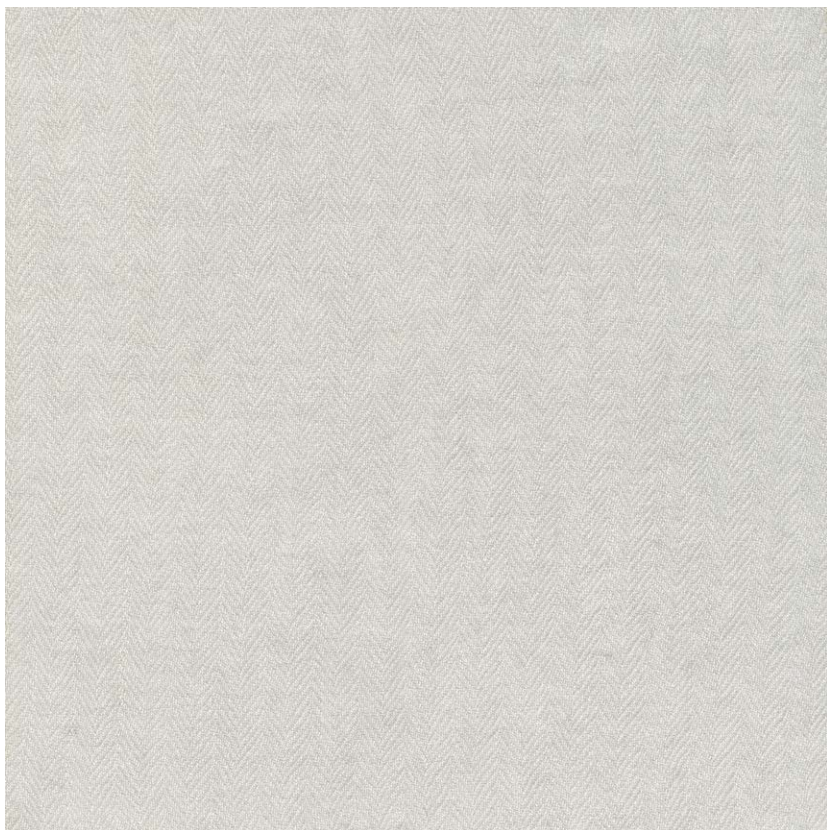


NAME

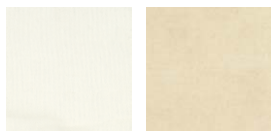
CACHEMIRE CHEVRON ARGENT

REFERENCE

CMO FCA 03 88 A



ALL AVAILABLE COLORS



CMO FCA 03 01 A CMO FCA 03 20 A

COLLECTION

Evasion 2

COLLECTION'S HISTORY

Unprecedentedly pure fibers – among the finest materials in the world – worked by highly skilled artisans: this is the promise of the collection, which gives unprecedented scope to silk, cashmere, linen, abaca, etc. When the delicacy of these materials reaches its peak, sumptuous gradations, sheer detailing, an exceptional hand and otherworldly draping imbued with the breath of nature are revealed.

USEFUL WIDTH

Sold per meter, width 140 cm (55")

REMARKS

Made to order

Colors can vary from each production

LEARN MORE

[Visit the website](#)

USE

Blind, curtain

REPEAT

Free match

WEIGHT

100 g (3.5 oz)

COMPOSITION

100% Superfine cashmere

MAXIMUM PIECE LENGTH

20 m (787")

CARE

Gentle handwash on cold water and steam iron

PRODUCT COMMITMENTS

 **Noble fiber**

 **Unrivalled softness**

 **Haute couture**

BRAND COMMITMENTS

Our products support local crafting activities. We preserve unique know-how and help its transmission from one generation to the next. The plants offering their fibres are grown or harvested in harmony with their ecosystems.

CONTACT

CMO Paris

35 Rue de Bellechasse, 75007 Paris

01 40 20 45 98

contact@cmoparis.com

www.cmoparis.com

