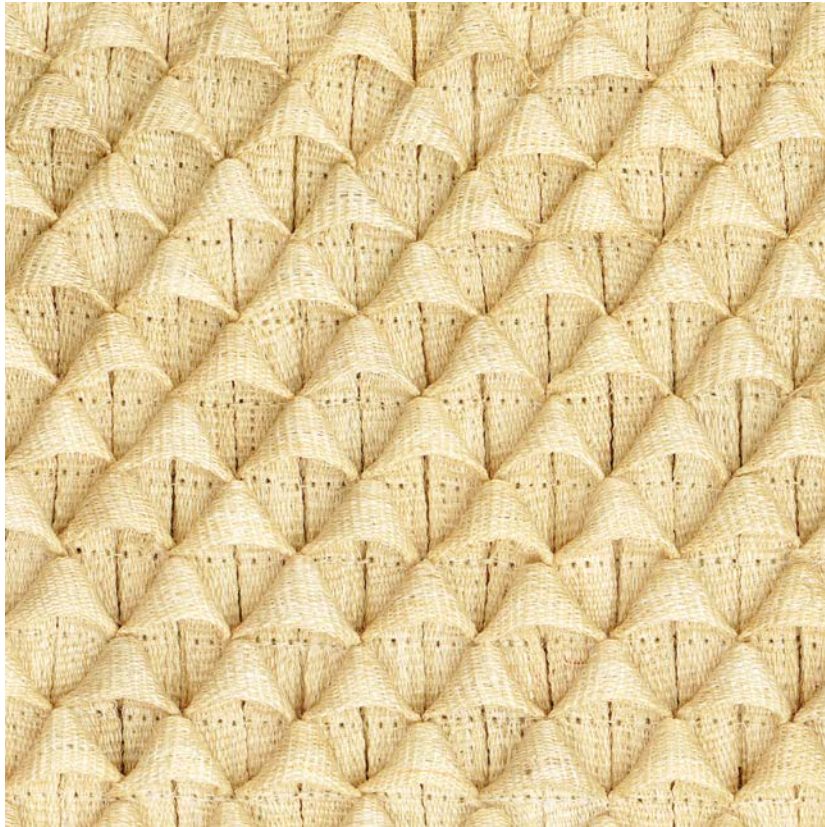


NAME

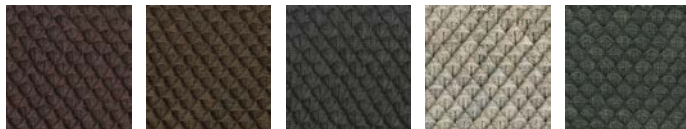
OLYMPE NATUREL

REFERENCE

CMO FEX 05 01



ALL AVAILABLE COLORS



CMO FEX 05 31

CMO FEX 05 70

CMO FEX 05 80

CMO FEX 05 81

CMO FEX 05 82

COLLECTION

Abaca 2

USE

Mural, furniture covering

COLLECTION'S HISTORY

It is one of the rarest things on our planet. Abaca carved in 3 dimensions is undoubtedly one of the most precious skilled crafts in the world of plant fiber. This collection and its exceptional pieces carry the incredible transmission- allowing gestures to be perpetuated over the decades and to continue to acquire even more finesse, delivering the unparalleled richness we find today.

REPEAT

Free match

WEIGHT

131 g (4.6 oz)

COMPOSITION

100% Abaca

MAXIMUM PIECE LENGHT

On demand

CARE

Vacuum cleaner

USEFUL WIDTH

On demand (Sold per square meter)

PRODUCT COMMITMENTS

🌿 **Rare craftsmanship**

🌿 **Hand-woven**

🌿 **Custom-made**

REMARKS

Colors can vary from each production

LEARN MORE

[Visit the website](#)

BRAND COMMITMENTS

Our products support local crafting activities. We preserve unique know-how and help its transmission from one generation to the next. The plants offering their fibres are grown or harvested in harmony with their ecosystems.

CONTACT

CMO Paris

35 Rue de Bellechasse, 75007 Paris

01 40 20 45 98

contact@cmoparis.com

www.cmoparis.com