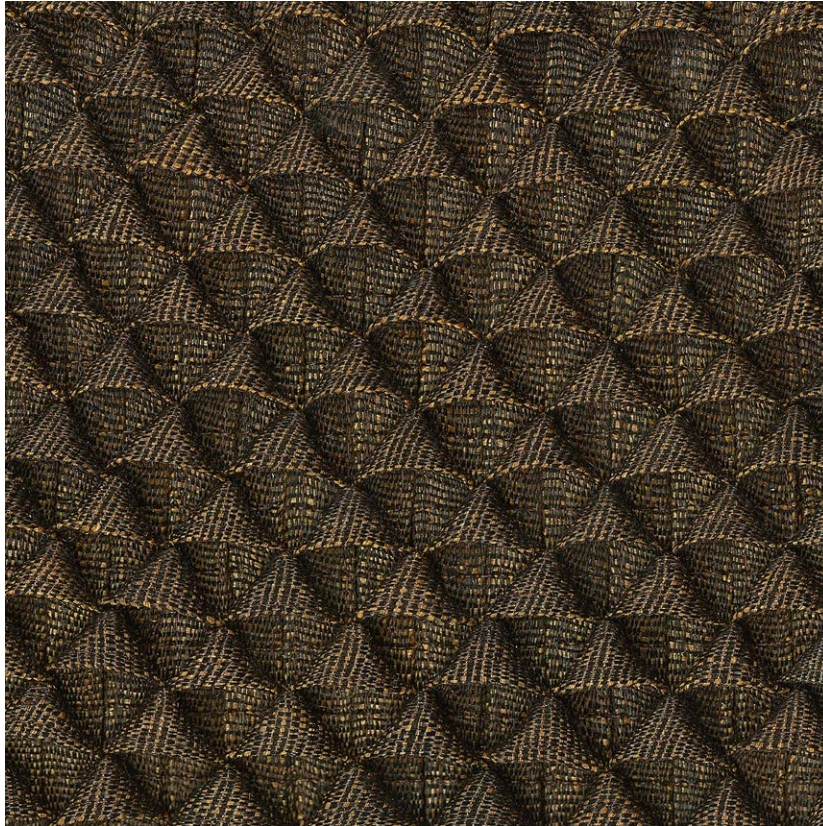


NAME

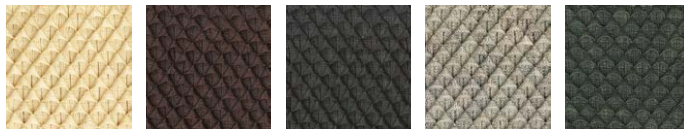
**OLYMPE AMBRÉ**

REFERENCE

**CMO FEX 05 70**



ALL AVAILABLE COLORS



CMO FEX 05 01

CMO FEX 05 31

CMO FEX 05 80

CMO FEX 05 81

CMO FEX 05 82

COLLECTION

**Abaca 2**

COLLECTION'S HISTORY

It is one of the rarest things on our planet. Abaca carved in 3 dimensions is undoubtedly one of the most precious skilled crafts in the world of plant fiber. This collection and its exceptional pieces carry the incredible transmission- allowing gestures to be perpetuated over the decades and to continue to acquire even more finesse, delivering the unparalleled richness we find today.

USEFUL WIDTH

**On demand (Sold per square meter)**

REMARKS

**Colors can vary from each production**

LEARN MORE

[Visit the website](#)

USE

**Mural, furniture covering**

REPEAT

**Free match**

WEIGHT

**131 g (4.6 oz)**

COMPOSITION

**100% Abaca**

MAXIMUM PIECE LENGHT


**On demand**

CARE

**Vacuum cleaner**

PRODUCT COMMITMENTS

 **Rare craftsmanship**

 **Hand-woven**

 **Custom-made**

BRAND COMMITMENTS

Our products support local crafting activities. We preserve unique know-how and help its transmission from one generation to the next. The plants offering their fibres are grown or harvested in harmony with their ecosystems.

CONTACT

**CMO Paris**

**35 Rue de Bellechasse, 75007 Paris**

**01 40 20 45 98**

**contact@cmoparis.com**

**www.cmoparis.com**