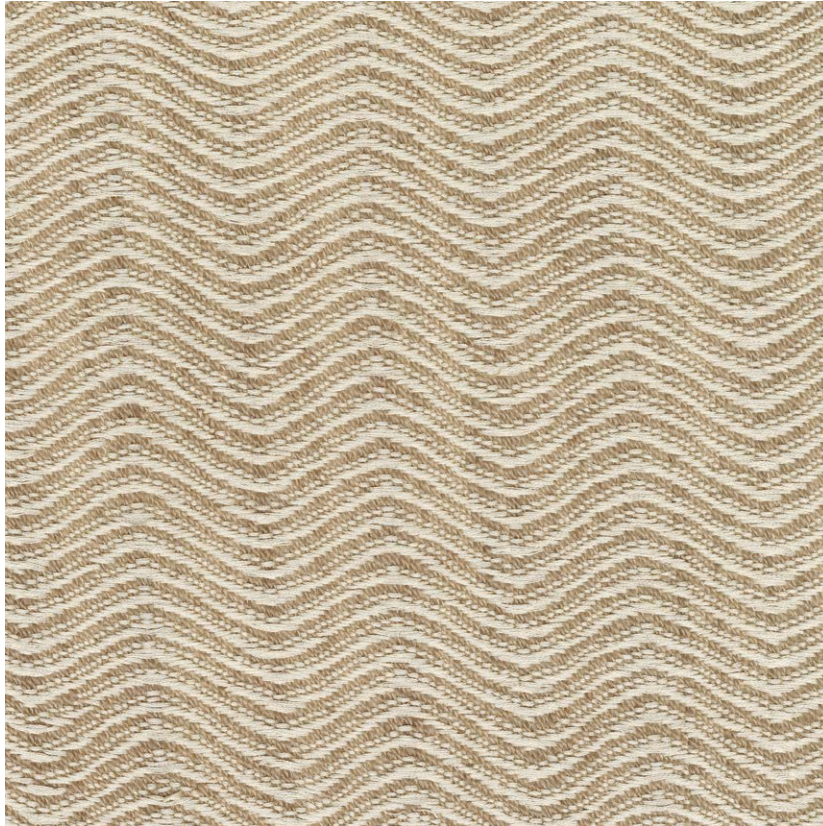


NAME

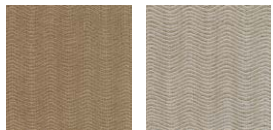
SOIE DUNE IVOIRE

REFERENCE

CMO FSO II 01



ALL AVAILABLE COLORS



CMO FSO II 78

CMO FSO II 84

COLLECTION

Evasion 2

COLLECTION'S HISTORY

Unprecedentedly pure fibers – among the finest materials in the world – worked by highly skilled artisans: this is the promise of the collection, which gives unprecedented scope to silk, cashmere, linen, abaca, etc. When the delicacy of these materials reaches its peak, sumptuous gradations, sheer detailing, an exceptional hand and otherworldly draping imbued with the breath of nature are revealed.

USEFUL WIDTH

Sold per meter, width 140 cm (55")

REMARKS

Made to order

Colors can vary from each production

LEARN MORE

[Visit the website](#)

USE

Blind, curtain

REPEAT

Free match

WEIGHT

260 g (9.2 oz)

COMPOSITION

60% Silk 40% Wool

MAXIMUM PIECE LENGTH

15 m (59'")

CARE

Handwash cold water
with woolen shampoo

PRODUCT COMMITMENTS

- 🌿 Noble fiber
- 🌿 Unrivalled softness
- 🌿 Haute couture

BRAND COMMITMENTS

Our products support local crafting activities. We preserve unique know-how and help its transmission from one generation to the next. The plants offering their fibres are grown or harvested in harmony with their ecosystems.

CONTACT

CMO Paris
35 Rue de Bellechasse, 75007 Paris
01 40 20 45 98
contact@cmoparis.com
www.cmoparis.com