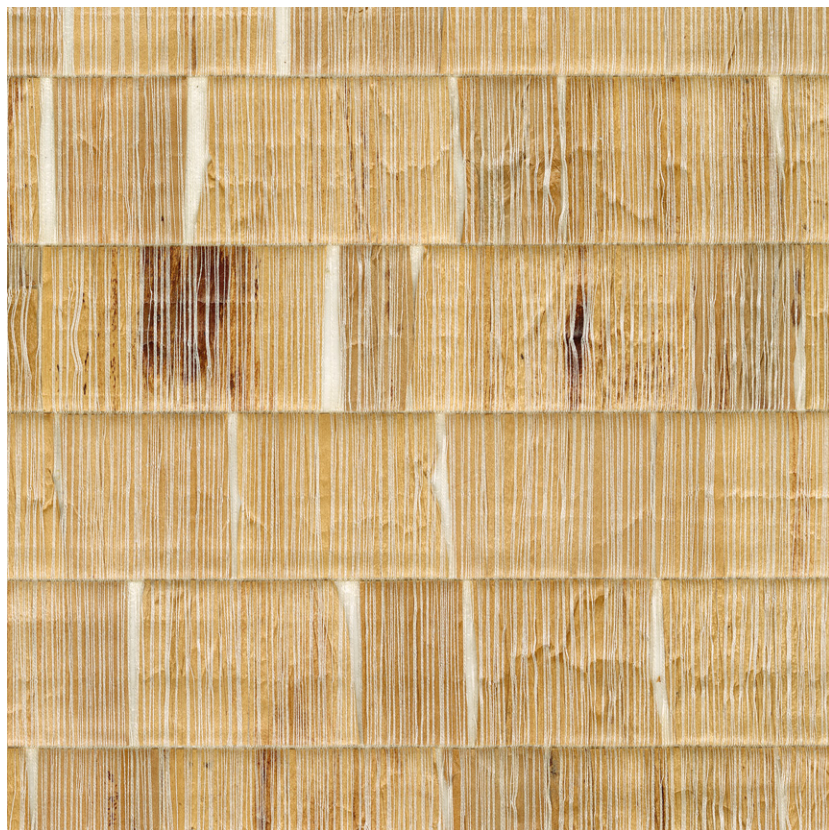


NAME

NÉNUPHAR SABLE

REFERENCE

CMO WNE 01 20



ALL AVAILABLE COLORS



CMO WNE 01 01

CMO WNE 01 70

CMO WNE 01 81

CMO WNE 01 88

COLLECTION

Natural essence wallcovering

COLLECTION'S HISTORY

The plant fibres follow an unusual path: borrowing their effects from rocks, they find their way to a new sophistication. Weaving water lilies reveals a mineral-style graining. Blending hemp and rattan with metallic threads enlivens the collection with new shades, also inspired by minerals.

USEFUL WIDTH

Sold per meter, width 110 cm (43,3")

REMARKS

Colors can vary from each production

LEARN MORE

[Visit the website](#)

USE

Wallcovering

REPEAT

Free match

FIRE RATING

Certificate on demand

WEIGHT

906 g (32 oz)

COMPOSITION

52 % Waterlily 29% PI

19% CO on a non-woven backing

VOC

On demand

MAXIMUM PIECE LENGTH

50 m (166'")

CARE

Avoid any contact with water, clean with a dry cloth

PRODUCT COMMITMENTS

✎ Hand-woven

✎ 1 days to make 1 m of weaving

✎ Fast growing water lily

BRAND COMMITMENTS

Our products support local crafting activities. We preserve unique know-how and help its transmission from one generation to the next. The plants offering their fibres are grown or harvested in harmony with their ecosystems.

CONTACT

CMO Paris

35 Rue de Bellechasse, 75007 Paris

01 40 20 45 98

contact@cmoparis.com

www.cmoparis.com