

NAME

## VACAO LIN BRIQUE

REFERENCE

CMO WPN 01 25



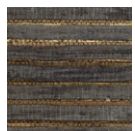
ALL AVAILABLE COLORS



CMO WPN 01 01



CMO WPN 01 10



CMO WPN 01 80



CMO WPN 01 86

COLLECTION

Pandan leaves - Linen wallcovering

USE

Wallcovering

COLLECTION'S HISTORY

It could be mistaken for a palm tree, but the screw pine is distinctly different. This plant, prized in basketry, fuses here with linen creating unique contrasts. Under the expert hand of the master artisan who skillfully crafts them, delicate stripes appear, sometimes intermingling with silver reflections for the darker hues.

REPEAT

Free match

FIRE RATING

Euroclass C-s1, d0

WEIGHT

376 g (13,3 oz)

COMPOSITION

70% Pandan leaves  
30% Linen on non woven backing

USEFUL WIDTH

Sold per meter, width 90 cm (35")

VOC

A+

REMARKS

Colors can vary from each production

MAXIMUM PIECE LENGTH

25 m (984")

LEARN MORE

[Visit the website](#)

CARE

Avoid any contact with water,  
clean with a dry cloth

PRODUCT COMMITMENTS

- ✎ Hand-woven on a traditional loom
- ✎ 1 day to produce 1 m
- ✎ Vacao leaves regenerate on their own

BRAND COMMITMENTS

Our products support local crafting activities. We preserve unique know-how and help its transmission from one generation to the next. The plants offering their fibres are grown or harvested in harmony with their ecosystems.

CONTACT

CMO Paris  
35 Rue de Bellechasse, 75007 Paris  
01 40 20 45 98  
[contact@cmoparis.com](mailto:contact@cmoparis.com)  
[www.cmoparis.com](http://www.cmoparis.com)