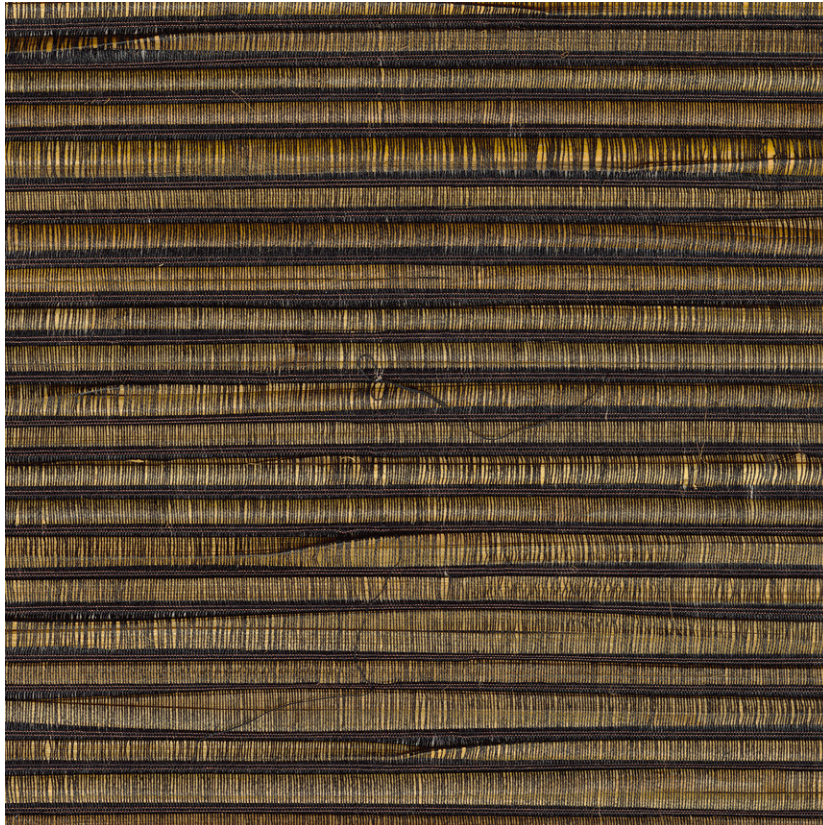


NAME

ROTIN BRONZE

REFERENCE

CMO WRO 01 90



ALL AVAILABLE COLORS



CMO WRO 01 02

CMO WRO 01 15

CMO WRO 01 20

CMO WNE 01 70

COLLECTION

Natural essence wallcovering

USE

Wallcovering

COLLECTION'S HISTORY

The plant fibres follow an unusual path: borrowing their effects from rocks, they find their way to a new sophistication. Weaving water lilies reveals a mineral-style graining. Blending hemp and rattan with metallic threads enlivens the collection with new shades, also inspired by minerals.

REPEAT

Free match

FIRE RATING

Certificate on demand

WEIGHT

1015 g (35,8 oz)

COMPOSITION

86% Rattan 12% CO
2% Copper on a non woven-backing

USEFUL WIDTH

Sold per meter, width 110 cm (43,3")

VOC

A+

REMARKS

Colors can vary from each production

MAXIMUM PIECE LENGHT

50 m (1969")

LEARN MORE

[Visit the website](#)

CARE

Avoid any contact with water,
clean with a dry cloth

PRODUCT COMMITMENTS

- ✦ Hand-woven
- ✦ 1 day to weave 1 metre of fabric
- ✦ Extracting the fiber helps maintain and regenerate palm forests

BRAND COMMITMENTS

Our products support local crafting activities. We preserve unique know-how and help its transmission from one generation to the next. The plants offering their fibres are grown or harvested in harmony with their ecosystems.

CONTACT

CMO Paris
35 Rue de Bellechasse, 75007 Paris
01 40 20 45 98
contact@cmoparis.com
www.cmoparis.com