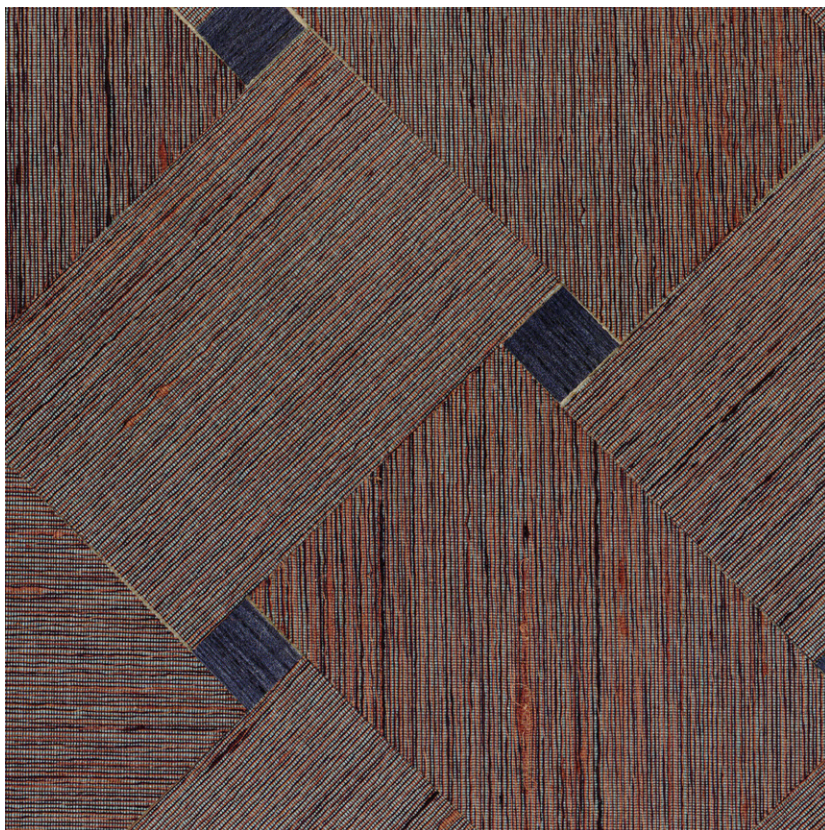


NAME

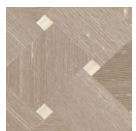
SOIE BOIS TRESSE BLEU PAON

REFERENCE

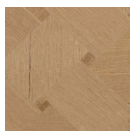
CMO WSO 03 48



ALL AVAILABLE COLORS



CMO WSO 03 15



CMO WSO 03 20



CMO WSO 03 68

COLLECTION

Silk wood wallcovering

USE

Wallcovering

COLLECTION'S HISTORY

A breathtaking interpretation of silk creates volume and texture. This noble material is combined with paulownia wood in three-dimensional artisanal marquetry, a unique blend of fibres that carries its texture in assertive natural shades of bark, spruce, honey, dune, and more, for even greater sophistication.

USEFUL WIDTH

Sold per meter, width 90 cm (35")

REMARKS

Colors can vary from each production

LEARN MORE

[Visit the website](#)

REPEAT

Vertical 22,5 cm (8,8")

Horizontal 22,5 cm (8,8")

FIRE RATING

Euroclass B-sl, d0

WEIGHT

380 g (13,4 oz)

COMPOSITION

50% Silk

50% Wood on non woven backing

VOC

A+

MAXIMUM PIECE LENGHT

15 m (59')

CARE

Avoid any contact with water,
clean with a dry cloth

PRODUCT COMMITMENTS

- 🌿 Noble fiber blend
- 🌿 1 day to make 1 m of marquetry
- 🌿 Hand woven

BRAND COMMITMENTS

Our products support local crafting activities. We preserve unique know-how and help its transmission from one generation to the next. The plants offering their fibres are grown or harvested in harmony with their ecosystems.

CONTACT

CMO Paris
35 Rue de Bellechasse, 75007 Paris
01 40 20 45 98
contact@cmoparis.com
www.cmoparis.com