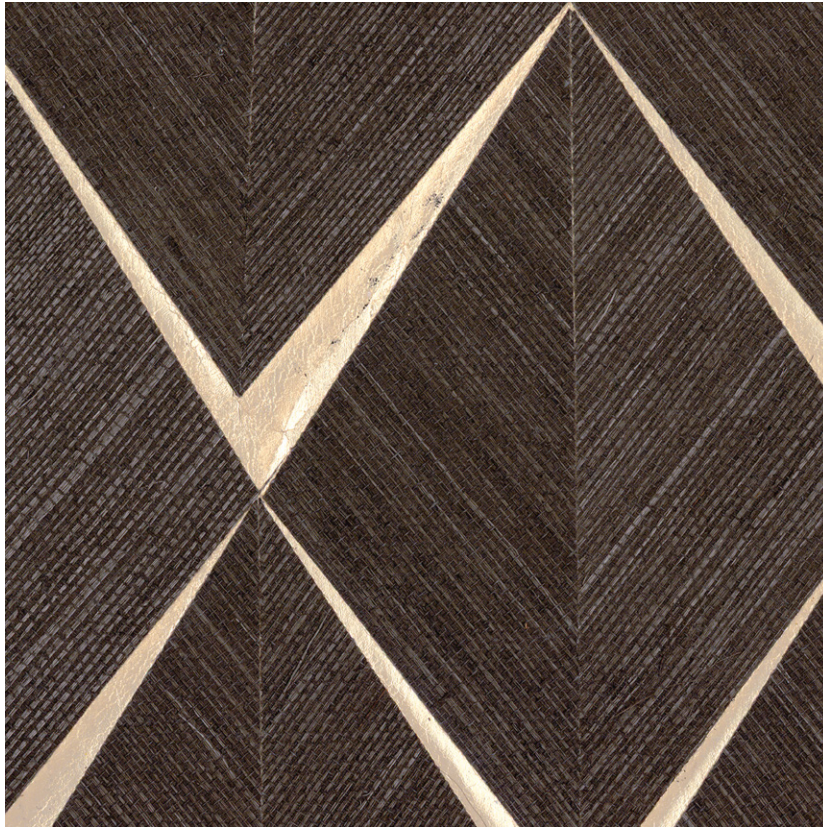


NAME

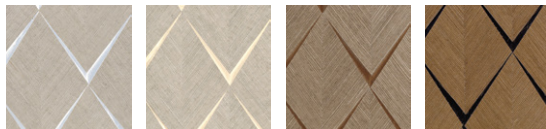
SISAL LOSANGE NOIR OR

REFERENCE

CMO WSI 02 80



ALL AVAILABLE COLORS



CMO WSI 02 10

CMO WSI 02 12

CMO WSI 02 15

CMO WSI 02 70

COLLECTION

Sisal wallcovering

USE

Wallcovering

COLLECTION'S HISTORY

In this luxurious universe, sisal expresses its precious vision. Its large leaves are individually handlaid and positioned to allow each one to play differently with light. Thanks to the master craftsman's precision, the extraordinary geometric patchwork reveals the base of the wallcovering, a mix of gloss and matt sublimate the fiber.

REPEAT

18 cm (7,1 ")

FIRE RATING

Certificate on demand

WEIGHT

260 g (9,1 oz)

COMPOSITION

100% Sisal on non woven backing

VOC

On demand

USEFUL WIDTH

Sold per meter, width 90 cm (35")

MAXIMUM PIECE LENGTH

25 m (984")

REMARKS

Colors can vary from each production

CARE

Avoid any contact with water, clean with a dry cloth

LEARN MORE

[Visit the website](#)

PRODUCT COMMITMENTS

- ✧ Hand-woven on a traditional loom
- ✧ Extremely resistant fiber
- ✧ Sisal reduces erosion

BRAND COMMITMENTS

Our products support local crafting activities. We preserve unique know-how and help its transmission from one generation to the next. The plants offering their fibres are grown or harvested in harmony with their ecosystems.

CONTACT

CMO Paris
35 Rue de Bellechasse, 75007 Paris
01 40 20 45 98
contact@cmoparis.com
www.cmoparis.com