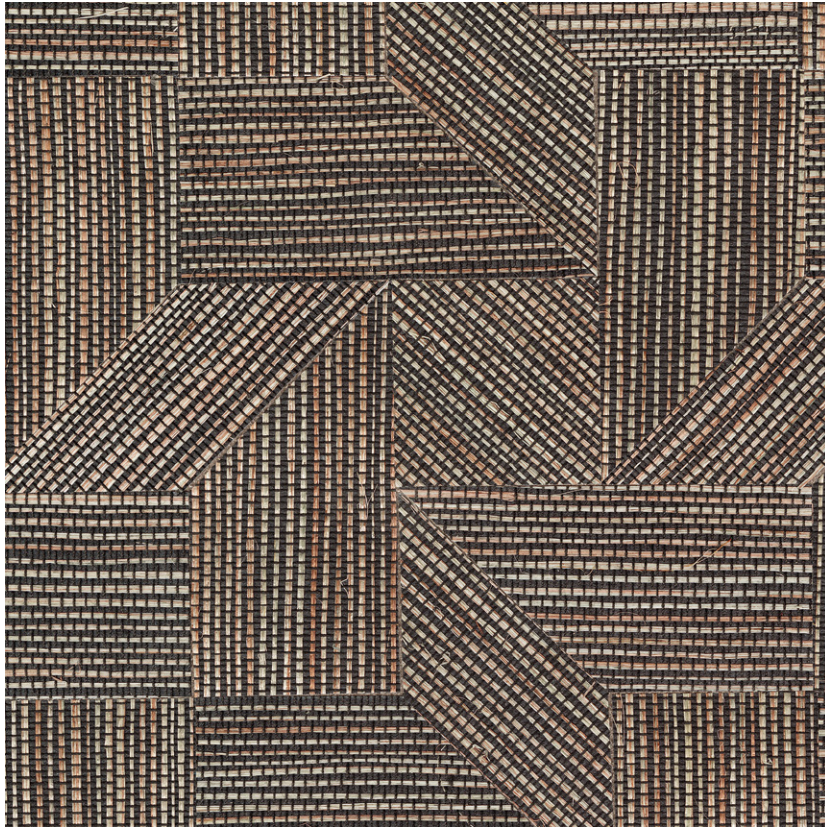


NAME

SISAL CANNAGE EPICEA

REFERENCE

CMO WSI 06 49



ALL AVAILABLE COLORS



CMO WSI 06 12

CMO WSI 06 15

CMO WSI 06 18

CMO WSI 06 20

CMO WSI 06 81

COLLECTION

Sisal wallcovering 2

USE

Wallcovering

COLLECTION'S HISTORY

The spotlight is on agave, with sisal fibre presented in unprecedented ways. By taking the form of vast marquetry work, opening up to pleating for the first time or adopting changing reflections, sisal is beautifully enhanced in unusual styles with nuanced mineral colours.

REPEAT

11,25 cm (4,5'')

FIRE RATING

Certificate on demand

WEIGHT

450 g (15,9 oz)

COMPOSITION

100% Sisal on non woven backing

USEFUL WIDTH

Sold per meter, width 90 cm (35'')

VOC

A+

REMARKS

Colors can vary from each production

MAXIMUM PIECE LENGTH

25 m (984'')

LEARN MORE

[Visit the website](#)

CARE

Avoid any contact with water, clean with a dry cloth

PRODUCT COMMITMENTS

- ✎ Hand-woven on a traditional loom
- ✎ Extremely resistant fiber
- ✎ Sisal reduces erosion

BRAND COMMITMENTS

Our products support local crafting activities. We preserve unique know-how and help its transmission from one generation to the next. The plants offering their fibres are grown or harvested in harmony with their ecosystems.

CONTACT

CMO Paris
35 Rue de Bellechasse, 75007 Paris
01 40 20 45 98
contact@cmoparis.com
www.cmoparis.com