

NAME

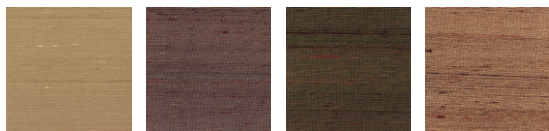
SOIE DUNE

REFERENCE

CMO WSO 01 15



ALL AVAILABLE COLORS



CMO WSO 01 20

CMO WSO 01 48

CMO WSO 01 68

CMO WSI 01 75

COLLECTION

Silk wood wallcovering

USE

Wallcovering

COLLECTION'S HISTORY

A breathtaking interpretation of silk creates volume and texture. This noble material is combined with paulownia wood in three-dimensional artisanal marquetry, a unique blend of fibres that carries its texture in assertive natural shades of bark, spruce, honey, dune, and more, for even greater sophistication.

REPEAT

Free match

FIRE RATING

Euroclass B-s1, d0

WEIGHT

380 g (13,4 oz)

COMPOSITION

100% Silk on non woven backing

VOC

A+

USEFUL WIDTH

Sold per meter, width 90 cm (35")

MAXIMUM PIECE LENGHT

25 m (984")

REMARKS

Colors can vary from each production

CARE

Avoid any contact with water, clean with a dry cloth

LEARN MORE

[Visit the website](#)

PRODUCT COMMITMENTS

- 🌿 Noble fiber blend
- 🌿 1 day to make 1 m of marquetry
- 🌿 Hand woven

BRAND COMMITMENTS

Our products support local crafting activities. We preserve unique know-how and help its transmission from one generation to the next. The plants offering their fibres are grown or harvested in harmony with their ecosystems.

CONTACT

CMO Paris  
35 Rue de Bellechasse, 75007 Paris  
01 40 20 45 98  
contact@cmoparis.com  
www.cmoparis.com