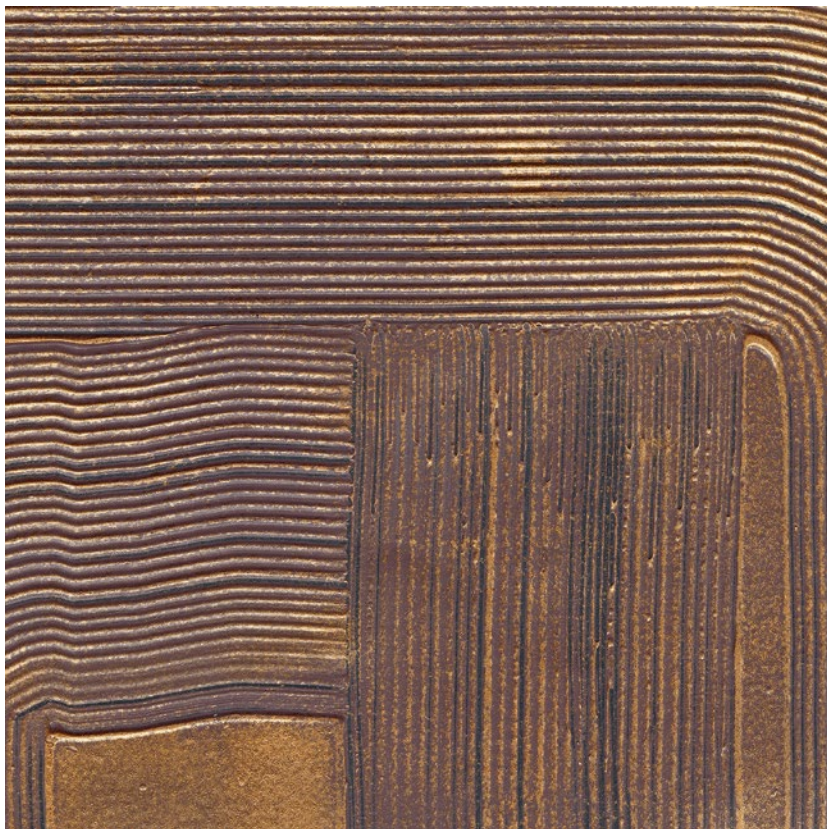


NAME

**GESSO PEIGNÉ BRONZE**

REFERENCE

**CMO WCA 03 90**



ALL AVAILABLE COLORS



CMO WCA 03 02 CMO WCA 03 20 CMO WCA 03 70 CMO WCA 03 88

COLLECTION

**Gesso wallcovering**

USE

**Wallcovering**

COLLECTION'S HISTORY

Hand-sculpted gesso creates fabulous crackle effects, stripes, fine ridges and a combed design, beautifully enhanced by flashes of gold, silver, copper and bronze. These genuine mineral sculptures present a unique range of options born of the hand of an artisan turned artist.

REPEAT

**Vertical 105 cm (41,5")**

FIRE RATING

**Certificate on demand**

WEIGHT

**660 g (23,3 oz)**

COMPOSITION

**50% PVA 25% Pigment 17% Calcium  
8% Mica on a non-woven backing**

USEFUL WIDTH

**Sold per meter, width 91,5 cm (35.8")**

VOC

**On demand**

REMARKS

**Reverse Hanging**

**Colors can vary from each production**

MAXIMUM PIECE LENGHT

**9 m (354")**




LEARN MORE

**[Visit the website](#)**

CARE

**Avoid any contact with water,  
clean with a dry cloth**

PRODUCT COMMITMENTS

-  **Mineral fiber**
-  **Hand-carved**
-  **Rare craftsmanship**

BRAND COMMITMENTS

Our products support local crafting activities. We preserve unique know-hows and help its transmission from one generation to the next. The plants that offer their fibres are grown or harvested in harmony with their ecosystems.

CONTACT

**CMO Paris  
35 Rue de Bellechasse, 75007 Paris  
01 40 20 45 98  
contact@cmoparis.com  
www.cmoparis.com**