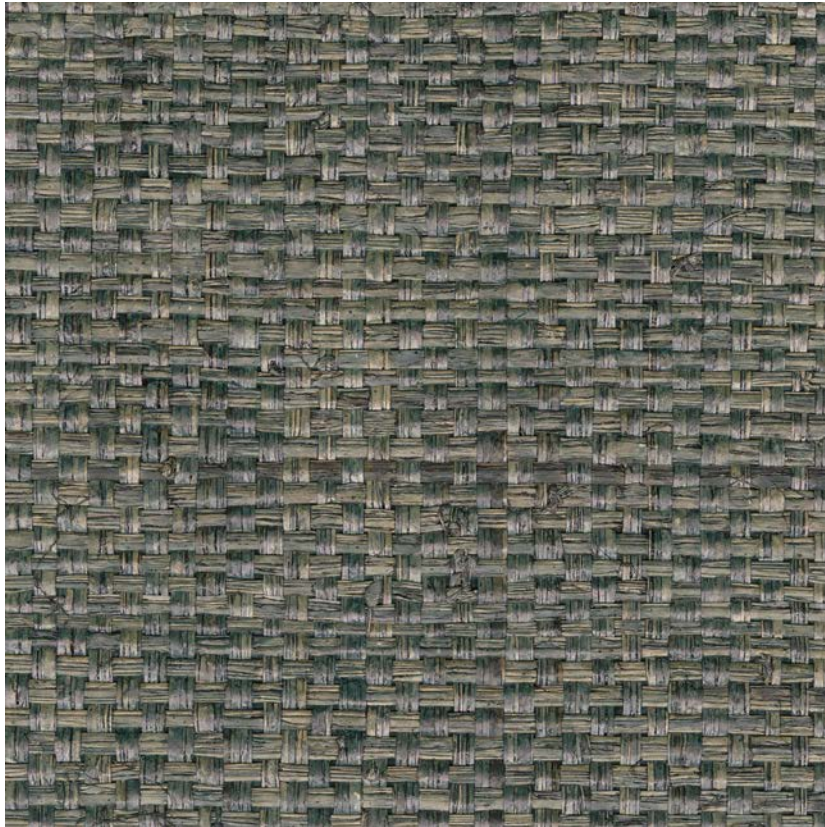


NAME

**RAPHIA MAILLE ÉPICÉA**

REFERENCE

**CMO WRA II 69**



ALL AVAILABLE COLORS



CMO WRA II 01

CMO WRA II 10

CMO WRA II 65

CMO WRA II 72

CMO WRA II 75

CMO WRA II 81

COLLECTION

**Raffia 4 wallcovering**

USE

**Wallcovering**

COLLECTION'S HISTORY

On the fringes of art, raffia explores new techniques in these breathtaking scenes. Worked with techniques that testify to unique dexterity, it displays authentic prowess. From embroidery and plant motifs to hand-dyed fringes and an unprecedented union with papyrus, raffia has carved out some spectacular paths for itself in terms of effects and designs, in the hands of outstanding artisans.

REPEAT

**Free match**

FIRE RATING

**Certificate on demand**

WEIGHT

**2.79 kg (98.4 oz)**

COMPOSITION

**100% Raffia on non woven backing**

VOC

**On demand**

USEFUL WIDTH

**Sold per roll 0.91 x 6.2 m (35"x244")**

MAXIMUM PIECE LENGTH

**6.2 m (244")**

REMARKS

**Colors can vary from each production**

CARE

**Avoid any contact with water, clean with a dry cloth**

LEARN MORE

**[Visit the website](#)**

PRODUCT COMMITMENTS

- 🌿 Hand-woven
- 🌿 1 day to make 1 metre
- 🌿 Extracting the fiber helps maintain and regenerate palm forests

BRAND COMMITMENTS

Our products support local crafting activities. We preserve unique know-how and help its transmission from one generation to the next. The plants offering their fibres are grown or harvested in harmony with their ecosystems.

CONTACT

CMO Paris  
35 Rue de Bellechasse, 75007 Paris  
01 40 20 45 98  
contact@cmoparis.com  
www.cmoparis.com