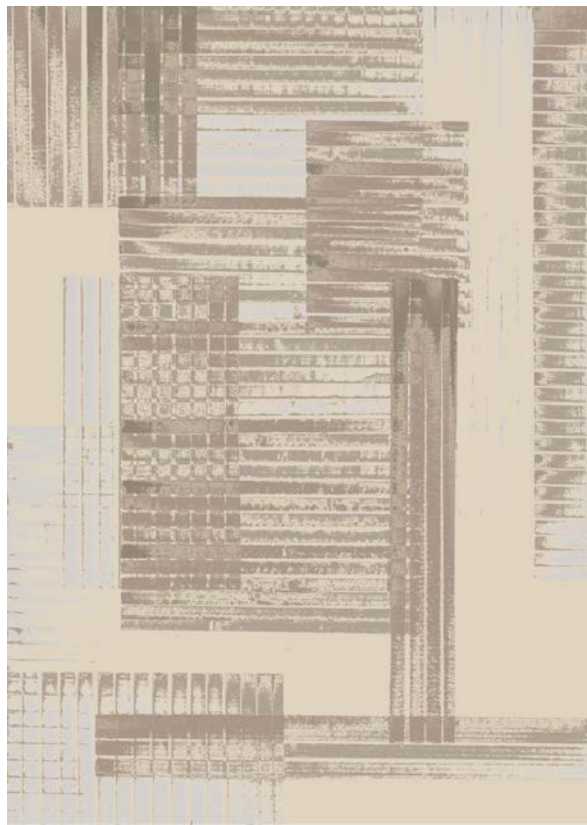


NAME

## SIROCCO NATUREL



MODEL : 250 x 350 cm

REFERENCE

CMO ATA 10 10



COLLECTION

Tapis

COLLECTION'S HISTORY

Made to order for you, these rugs occupy a unique place in the world of craftsmanship. Silk, Tibetan wool, Nepalese hemp, linen and even nettle share their finest secrets in these exceptional creations.

SIZE

On demand (sold per square meter)

QUALITY

100 knots

REMARKS

Colors may vary from one production to another.

LEARN MORE

[Visit the website](#)

USE

Rug

WEIGHT

4 kg per m<sup>2</sup> (12.2 oz per sq ft)

COMPOSITION

40% silk 35% wool 25% hemp

CARE

Vacuum regularly. Water and solvent cleanable. Spot clean spills and stains Immediately. No heat or steam. Professional cleaning when needed. Rotate carpet from time to time for even discoloration over time.

PRODUCT COMMITMENTS

- ☞ Hand knotted
- ☞ On demand
- ☞ Natural colours

BRAND COMMITMENTS

Our products support local crafting activities. We preserve unique know-hows and help its transmission from one generation to the next. The plants that offer their fibres are grown or harvested in harmony with their ecosystems.

CONTACT

CMO Paris  
35 Rue de Bellechasse, 75007 Paris  
01 40 20 45 98  
[contact@cmoparis.com](mailto:contact@cmoparis.com)  
[www.cmoparis.com](http://www.cmoparis.com)