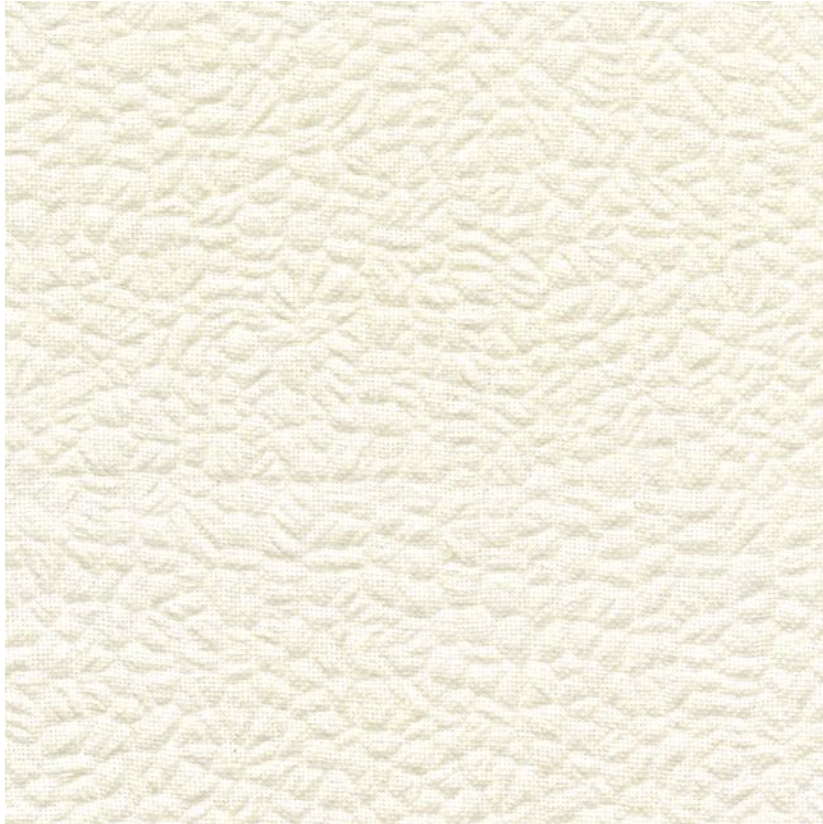


NAME

LIN MARTELÉ IVOIRE

REFERENCE

CMO FLI 08 01



ALL AVAILABLE COLORS



CMO FLI 08 78

CMO FLI 08 84

COLLECTION

Odyssey

USE

Curtain, blind

COLLECTION'S HISTORY

With *Odyssee*, some of the world's most beautiful fires explore unparalleled know-how, taking them to new heights of refinement. The sumptuous quality of these textiles, which include silk, banana leaves, linen and yak, can be seen in the incredible lightness of the interplay of transparencies and graduated shades, in the textures of the hand-spun fibres, and in the meticulous weaves that reveal the artisan's absolute mastery at every turn.

REPEAT

Free match

WEIGHT

300 g (10.6 oz)

COMPOSITION

100% LI

MAXIMUM PIECE LENGTH

On demand

CARE

Dry cleaning

PRODUCT COMMITMENTS

- 🌿 A world of soft and delicate
- 🌿 Noble fiber
- 🌿 Preserving old skills

USEFUL WIDTH

Sold per meter, width 150 cm (59")

REMARKS

Colors can vary from each production

LEARN MORE

[Visit the website](#)

BRAND COMMITMENTS

Our products support local crafting activities. We preserve unique know-how and help its transmission from one generation to the next. The plants offering their fibres are grown or harvested in harmony with their ecosystems.

CONTACT

CMO Paris
35 Rue de Bellechasse, 75007 Paris
01 40 20 45 98
contact@cmoparis.com
www.cmoparis.com