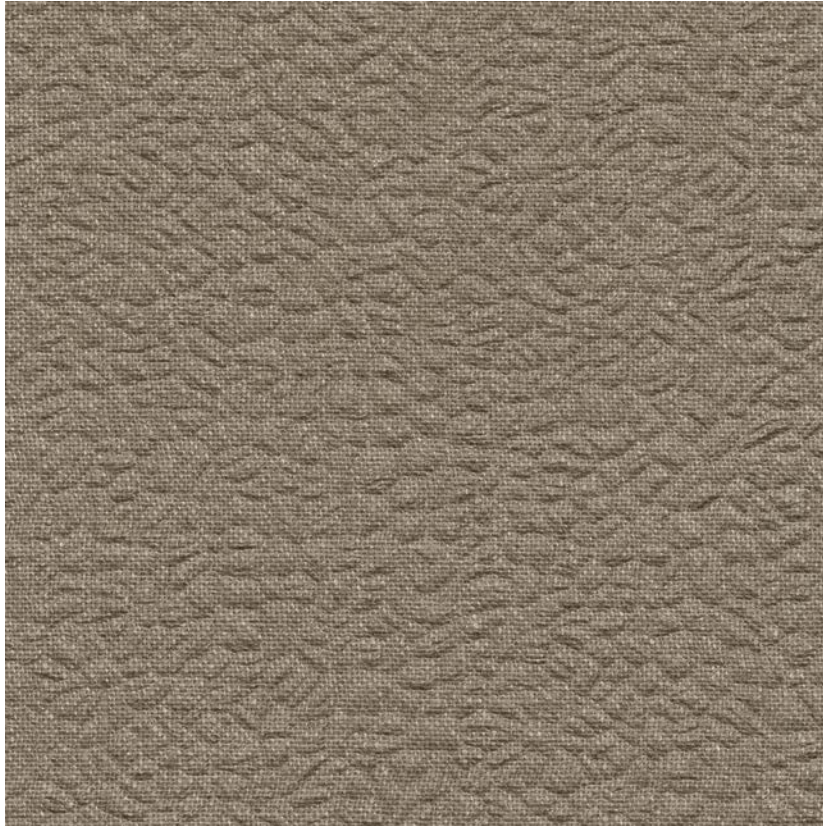


NAME

**LIN MARTELÉ TAUPE**

REFERENCE

**CMO FLI 08 78**



ALL AVAILABLE COLORS



CMO FLI 08 01

CMO FLI 08 84

COLLECTION

**Odyssey**

USE

**Curtain, blind**

COLLECTION'S HISTORY

**With Odysée, some of the world's most beautiful fires explore unparalleled know-how, taking them to new heights of refinement. The sumptuous quality of these textiles, which include silk, banana leaves, linen and yak, can be seen in the incredible lightness of the interplay of transparencies and graduated shades, in the textures of the hand-spun fibres, and in the meticulous weaves that reveal the artisan's absolute mastery at every turn.**

REPEAT

**Free match**

WEIGHT

**300 g (10.6 oz)**

COMPOSITION

**100% LI**




MAXIMUM PIECE LENGHT

**On demand**

CARE

**Dry cleaning**

PRODUCT COMMITMENTS

-  **A world of soft and delicate**
-  **Noble fiber**
-  **Preserving old skills**

USEFUL WIDTH

**Sold per meter, width 150 cm (59")**

REMARKS

**Colors can vary from each production**

LEARN MORE

**[Visit the website](#)**

BRAND COMMITMENTS

**Our products support local crafting activities. We preserve unique know-how and help its transmission from one generation to the next. The plants offering their fibres are grown or harvested in harmony with their ecosystems.**

CONTACT

**CMO Paris  
35 Rue de Bellechasse, 75007 Paris  
01 40 20 45 98  
contact@cmoparis.com  
www.cmoparis.com**