

NAME

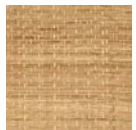
ABACA HERBACÉ TABAC

REFERENCE

CMO WAB II 72



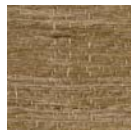
ALL AVAILABLE COLORS



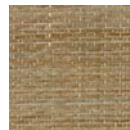
CMO WAB II 10



CMO WAB II 67



CMO WAB II 81



CMO WAB II 83

COLLECTION

Abaca wallcovering

USE

Wallcovering

COLLECTION'S HISTORY

Abaca, one of CMO's signature materials, is used here in exceptional creations, revealing its natural strength through new techniques, worked either raw or woven. These visual and tactile creations elevate the vibration of the fibre and play on the regularity or irregularity of its weave. They carry all the power of know-how handed down from generation to generation, enhanced in this collection with the vision of an artisan who loves its light.

REPEAT

Free match

FIRE RATING

Certificate on demand

WEIGHT

2.79 kg (98.4 oz)

COMPOSITION

100% Abaca on non woven backing

VOC

On demand

MAXIMUM PIECE LENGTH

6.2m (244")

USEFUL WIDTH

Sold per roll 0.91 x 6.2m (35"x244")

CARE

Avoid any contact with water, clean with a dry cloth

REMARKS

Colors can vary from each production

LEARN MORE

[Visit the website](#)

PRODUCT COMMITMENTS

🌿 Eco friendly, the tree is not uprooted

🌿 Hand woven

🌿 1 day to make 1 meter

BRAND COMMITMENTS

Our products support local crafting activities. We preserve unique know-how and help its transmission from one generation to the next. The plants offering their fibres are grown or harvested in harmony with their ecosystems.

CONTACT

CMO Paris

35 Rue de Bellechasse, 75007 Paris

01 40 20 45 98

contact@cmoparis.com

www.cmoparis.com