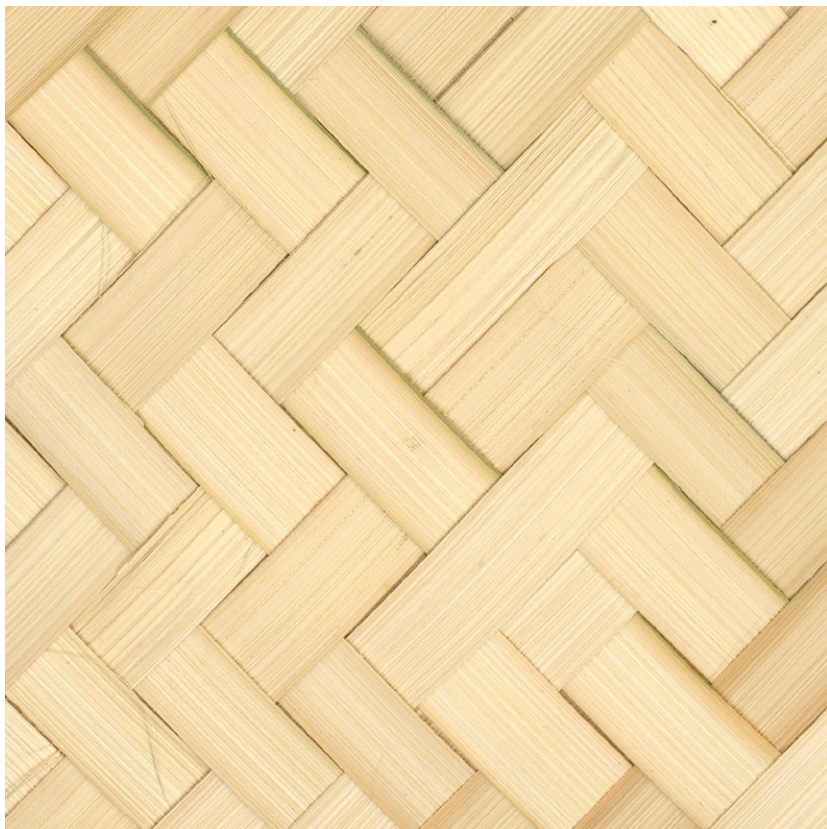


NAME

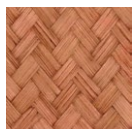
BAMBOU PETIT CHEVRON NATUREL

REFERENCE

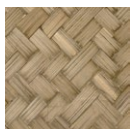
CMO WBB 01 10



ALL AVAILABLE COLORS



CMO WBB 01 72



CMO WBB 01 79

COLLECTION

Bamboo wallcovering

USE

Wallcovering

COLLECTION'S HISTORY

A master of light and shadow, bamboo brings its precious duality to life in skilful weaves. On these braids, patterns in twill and herringbone canvas come together with an energy that captivates the gaze. Entirely hand-worked with unerring dexterity, its naturalness is expressed in tactile sophistication and warm depth.

REPEAT

Free match

FIRE RATING

Certificate on demand

WEIGHT

2.5 kg (88.2 oz)

COMPOSITION

100% Bamboo on non woven backing

VOC

On demand

USEFUL WIDTH

Panel 0.91 x 3.10 m (35" x 122")

MAXIMUM PIECE LENGHT

0.91 x 3.10 m (35" x 122")

REMARKS

Colors can vary from each production




CARE

Avoid any contact with water, clean with a dry cloth

LEARN MORE

[Visit the website](#)

PRODUCT COMMITMENTS

-  1 day to make 3 meters
-  Bambu is fast regenerating
-  Hand making

BRAND COMMITMENTS

Our products support local crafting activities. We preserve unique know-how and help its transmission from one generation to the next. The plants offering their fibres are grown or harvested in harmony with their ecosystems.

CONTACT

CMO Paris
35 Rue de Bellechasse, 75007 Paris
01 40 20 45 98
contact@cmoparis.com
www.cmoparis.com

