

NAME

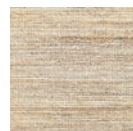
CHANVRE DU NÉPAL NATUREL

REFERENCE

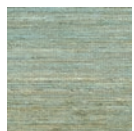
CMO WLI 01 01



ALL AVAILABLE COLORS



CMO WLI 01 02



CMO WLI 01 40

COLLECTION

Natural essence, Nepali hemp
wallcovering

COLLECTION'S HISTORY

The plant fibres follow an unusual path: borrowing their effects from rocks, they find their way to a new sophistication. Weaving water lilies reveals a mineral-style graining.

Blending hemp and rattan with metallic threads enlivens the collection with new shades, also inspired by minerals.

USEFUL WIDTH

Sold per meter, width 110 cm (43,5")

REMARKS

Colors can vary from each production

LEARN MORE

[Visit the website](#)

USE

Wallcovering

REPEAT

Free match

FIRE RATING

Euroclass C-sI, d0

WEIGHT

700 g (24,7 oz)

COMPOSITION

89% Hemp 6% Nylon
5% PL on non woven backing

VOC

A+

MAXIMUM PIECE LENGHT

50 m (169")

CARE

Avoid any contact with water,
clean with a dry cloth

PRODUCT COMMITMENTS

- Hand-woven
- 1 day to weave 1 m
- Hemp fixes a large quantity of CO2

BRAND COMMITMENTS

Our products support local crafting activities. We preserve unique know-how and help its transmission from one generation to the next. The plants offering their fibres are grown or harvested in harmony with their ecosystems.

CONTACT

CMO Paris
35 Rue de Bellechasse, 75007 Paris
01 40 20 45 98
contact@cmoparis.com
www.cmoparis.com