

NAME

## CHANVRE DU NÉPAL PIERRE



REFERENCE

CMO WLI 01 02

COLLECTION

Natural essence, Nepali hemp  
wallcovering

COLLECTION'S HISTORY

The plant fibres follow an unusual path: borrowing their effects from rocks, they find their way to a new sophistication. Weaving water lilies reveals a mineral-style graining. Blending hemp and rattan with metallic threads enlivens the collection with new shades, also inspired by minerals.

USEFUL WIDTH

Sold per meter, width 110 cm (43,5")

REMARKS

Colors can vary from each production

LEARN MORE

[Visit the website](#)

USE

Wallcovering

REPEAT

Free match

FIRE RATING

Euroclass C-sI, d0

WEIGHT

700 g (24,7 oz)

COMPOSITION

89% Hemp 6% Nylon  
5% PL on non woven backing

VOC

A+

MAXIMUM PIECE LENGHT

50 m (169")

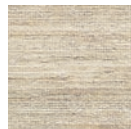
CARE

Avoid any contact with water,  
clean with a dry cloth

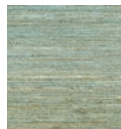
PRODUCT COMMITMENTS

- Hand-woven
- I day to weave I m
- Hemp fixes a large quantity of CO2

ALL AVAILABLE COLORS



CMO WLI 01 01



CMO WLI 01 04

BRAND COMMITMENTS

Our products support local crafting activities. We preserve unique know-how and help its transmission from one generation to the next. The plants offering their fibres are grown or harvested in harmony with their ecosystems.

CONTACT

CMO Paris  
35 Rue de Bellechasse, 75007 Paris  
01 40 20 45 98  
[contact@cmoparis.com](mailto:contact@cmoparis.com)  
[www.cmoparis.com](http://www.cmoparis.com)