

NAME

ABACA PIERRE (G08)

REFERENCE

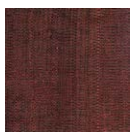
CMO FAB 01 81



ALL AVAILABLE COLORS



CMO FAB 01 01



CMO FAB 01 31



CMO FAB 01 70



CMO FAB 01 82

COLLECTION

Abaca

COLLECTION'S HISTORY

Each meter / yard of fabric is carefully created and hand-woven on traditional wooden looms. All the colors found in the Abaca and Abaca Optical references are hand-polished with shell to add shine to the fabric. From harvesting to drying the fiber and weaving it, several steps are essential to obtain the highest quality fabric.

USEFUL WIDTH

Sold per meter, width 60 cm (23")

REMARKS

Vegetal colors polished with a shell

LEARN MORE

[Visit the website](#)

USE

Blind, sliding panel, furniture covering, lampshade, upholstery (with a backing)

REPEAT

Free match

WEIGHT

130 g (4.6 oz)

COMPOSITION

100% Abaca

MAXIMUM PIECE LENGTH

10 m (394")

CARE

Dry cleaning

PRODUCT COMMITMENTS

- 🌿 Hand-woven
- 🌿 1 day to weave 1 m
- 🌿 Natural fiber

BRAND COMMITMENTS

Our products support local crafting activities. We preserve unique know-how and help its transmission from one generation to the next. The plants offering their fibres are grown or harvested in harmony with their ecosystems.

CONTACT

CMO Paris
35 Rue de Bellechasse, 75007 Paris
01 40 20 45 98
contact@cmoparis.com
www.cmoparis.com