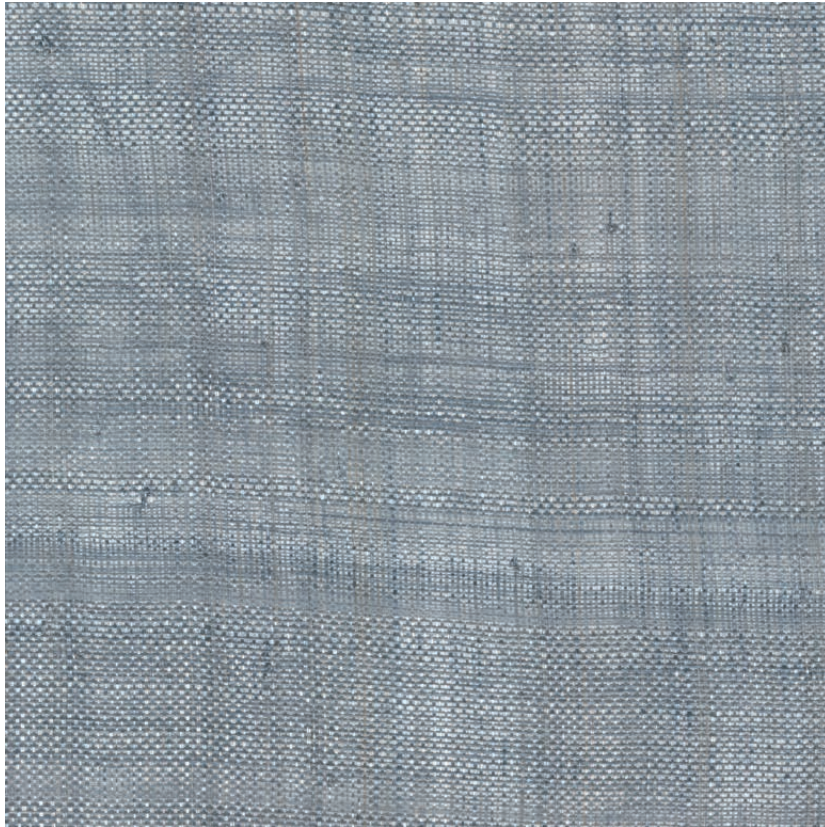


NAME

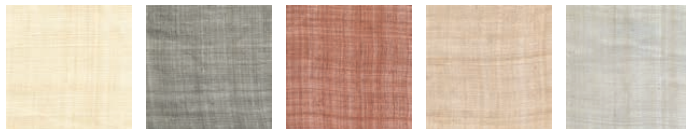
ABACA LIGHT ORAGE

REFERENCE

CMO FAB 05 82



ALL AVAILABLE COLORS



CMO FAB 05 10 CMO FAB 05 68 CMO FAB 05 72 CMO FAB 05 84 CMO FAB 05 88

COLLECTION

Abaca 3

COLLECTION'S HISTORY

Letting light through while preserving privacy. Playing with transparency while emphasising natural texture: this is the art that these Japanese-inspired abaca panels master to perfection. Alongside them, raffia and hemp create a harmonious whole, diffusing their own authentic and organic aura, a discreet theatre of light.

USEFUL WIDTH

Sold per meter, width 90 cm (35")

REMARKS

Vegetal colors polished with a shell

LEARN MORE

[Visit the website](#)

USE

Blind, sliding wall, glass inclusion

REPEAT

Free match

WEIGHT

210 g (7.4 oz)

COMPOSITION

100% abaca

CARE

Dry cleaning

PRODUCT COMMITMENTS

✧ Hand-woven

✧ 1 day to weave 1 metre of fabric

✧ 5 to 7 days to hand-knot one kilo of fibre

BRAND COMMITMENTS

Our products support local crafting activities. We preserve unique know-how and help its transmission from one generation to the next. The plants offering their fibres are grown or harvested in harmony with their ecosystems.

CONTACT

CMO Paris

38 rue Jacob, 75006 Paris

01 40 20 45 98

contact@cmoparis.com

www.cmoparis.com