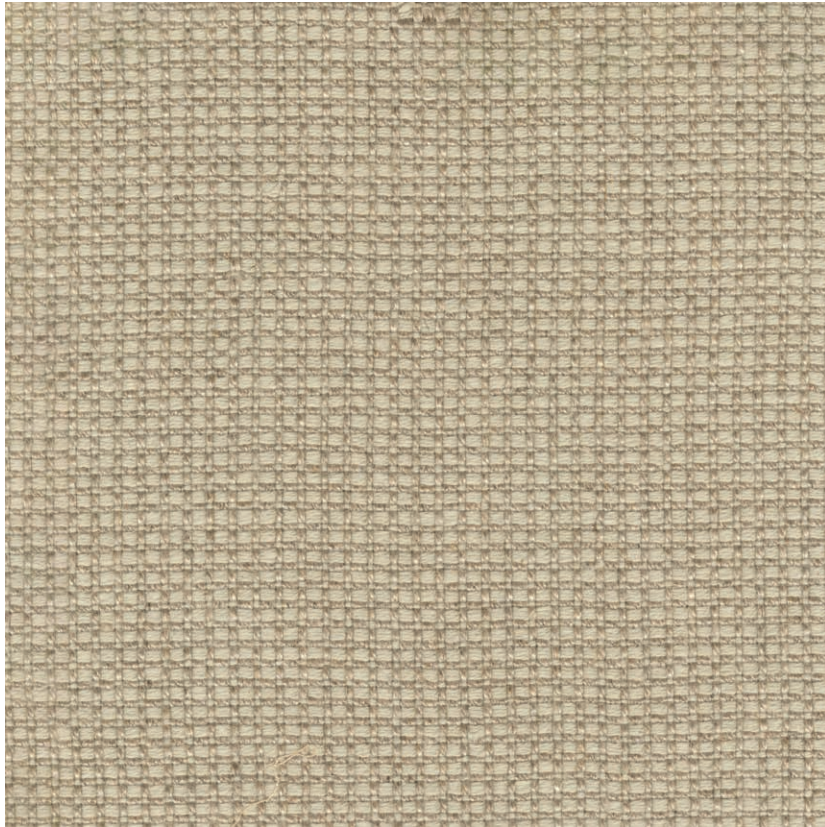


NAME

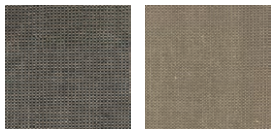
**LIN DOUBLE FACE FICELLE**

REFERENCE

**CMO FLI I0 73**



ALL AVAILABLE COLORS



CMO FLI I0 80

CMO FLI I0 82

COLLECTION

**Evasion 3**

COLLECTION'S HISTORY

The world's most exceptional materials are revealed here, inspiring the ultimate in sophistication. A precious journey to discover incredible wool crepes, exquisite silks, extremely soft cashmere and alpaca, and sublime linens. Here, traditional craftsmanship is perpetuated, pushing elegance to its absolute peak.

USEFUL WIDTH

**Sold per meter, width 130 cm (51")**

REMARKS

Colors can vary from each production

LEARN MORE

[Visit the website](#)

USE

**Upholstery, cushion**

REPEAT

**Free match**

MARTINDALE

**25 000**

WEIGHT

**1150 g (40.5 oz)**

COMPOSITION

**100% linen**

CARE

**Dry cleaning**

PRODUCT COMMITMENTS

- ☞ Soft and delicate
- ☞ Noble fiber
- ☞ Reversible

BRAND COMMITMENTS

Our products support local crafting activities. We preserve unique know-how and help its transmission from one generation to the next. The plants offering their fibres are grown or harvested in harmony with their ecosystems.

CONTACT

**CMO Paris**

**38 rue Jacob, 75006 Paris**

**01 40 20 45 98**

**contact@cmoparis.com**

**www.cmoparis.com**