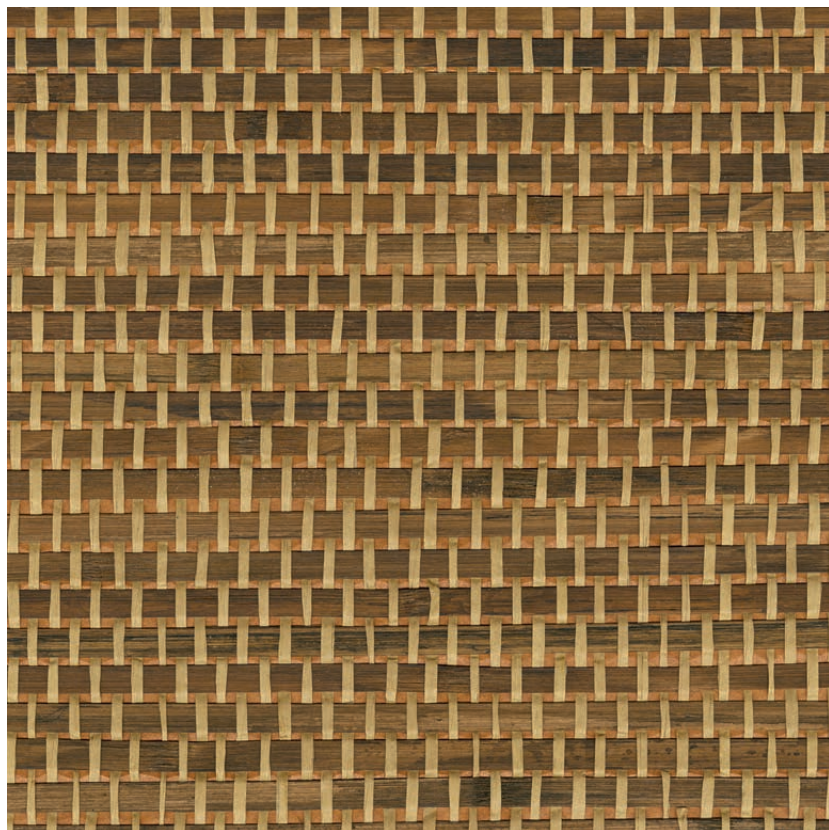


NAME

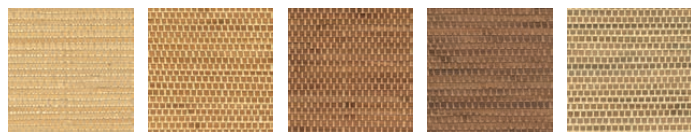
BAMBOU TRESSÉ KAKI

REFERENCE

CMO WBB 07 65



ALL AVAILABLE COLORS



CMO WBB 07 02 CMO WBB 07 10 CMO WBB 07 72 CMO WBB 07 74 CMO WBB 07 79

COLLECTION

Bamboo wallcovering 2

COLLECTION'S HISTORY

Unrivalled in its ability to reflect and dance with light, bamboo stands alone here in all its majesty, adorned with new shades. From natural to khaki, all are soft and exude a charm that fascinates us. Crafted with incredible finesse in weaves that are as sophisticated as they are tactile, the fibre enhances the purity of a craft that is as rare as it is authentic.

USEFUL WIDTH

Sold per meter, width 91 cm (36")

REMARKS

Colors can vary from each production.

LEARN MORE

[Visit the website](#)

USE

Wallcovering

REPEAT

Free match

FIRE RATING

Certificate on demand

WEIGHT

478 g (16.8 oz)

COMPOSITION

**70% bamboo 30% paper
on non woven backing**

VOC

On demand

CARE

**Avoid any contact with water,
clean with a dry cloth**

PRODUCT COMMITMENTS

- 🌱 1 day to make 3 meters
- 🌱 Bamboo is fast regenerating
- 🌱 Hand making

BRAND COMMITMENTS

Our products support local crafting activities. We preserve unique know-how and help its transmission from one generation to the next. The plants offering their fibres are grown or harvested in harmony with their ecosystems.

CONTACT

CMO Paris
38 rue Jacob, 75006 Paris
01 40 20 45 98
contact@cmoparis.com
www.cmoparis.com