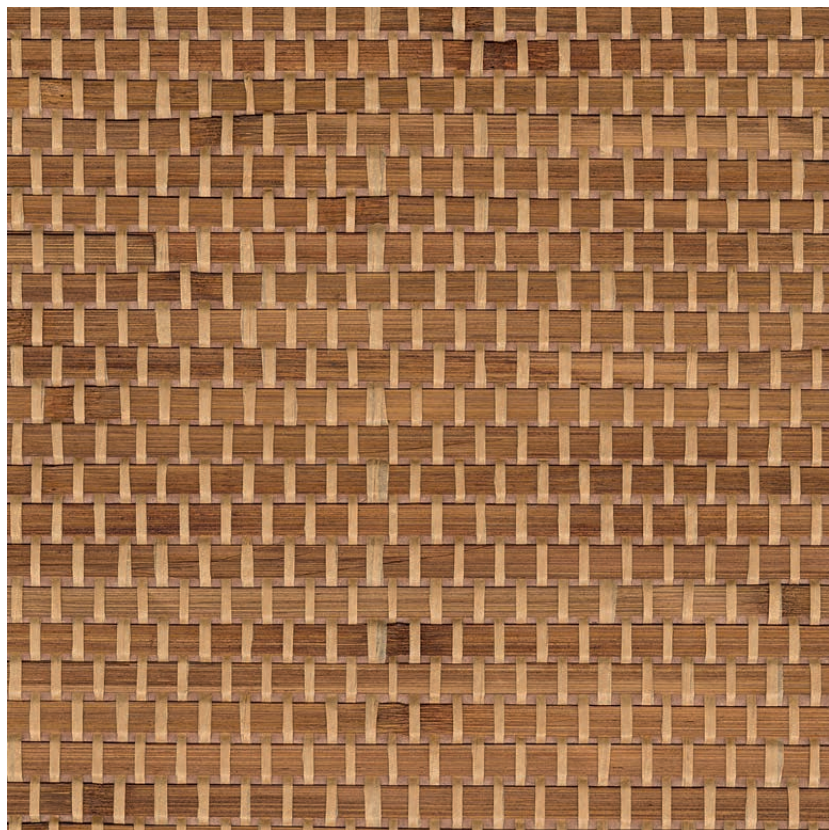


NAME

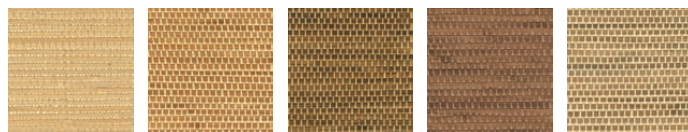
**BAMBOU TRESSÉ TABAC**

REFERENCE

**CMO WBB 07 72**



ALL AVAILABLE COLORS



CMO WBB 07 02 CMO WBB 07 10 CMO WBB 07 65 CMO WBB 07 74 CMO WBB 07 79

COLLECTION

**Bamboo wallcovering 2**

COLLECTION'S HISTORY

Unrivalled in its ability to reflect and dance with light, bamboo stands alone here in all its majesty, adorned with new shades. From natural to khaki, all are soft and exude a charm that fascinates us. Crafted with incredible finesse in weaves that are as sophisticated as they are tactile, the fibre enhances the purity of a craft that is as rare as it is authentic.

USEFUL WIDTH

**Sold per meter, width 91 cm (36")**

REMARKS

**Colors can vary from each production.**

LEARN MORE

[Visit the website](#)

USE

**Wallcovering**

REPEAT

**Free match**

FIRE RATING

**Certificate on demand**

WEIGHT

**478 g (16.8 oz)**

COMPOSITION

**70% bamboo 30% paper  
on non woven backing**

VOC

**On demand**

CARE

**Avoid any contact with water,  
clean with a dry cloth**

PRODUCT COMMITMENTS

- 🌱 1 day to make 3 meters
- 🌱 Bamboo is fast regenerating
- 🌱 Hand making

BRAND COMMITMENTS

Our products support local crafting activities. We preserve unique know-how and help its transmission from one generation to the next. The plants offering their fibres are grown or harvested in harmony with their ecosystems.

CONTACT

**CMO Paris**  
**38 rue Jacob, 75006 Paris**  
**01 40 20 45 98**  
**contact@cmoparis.com**  
**www.cmoparis.com**