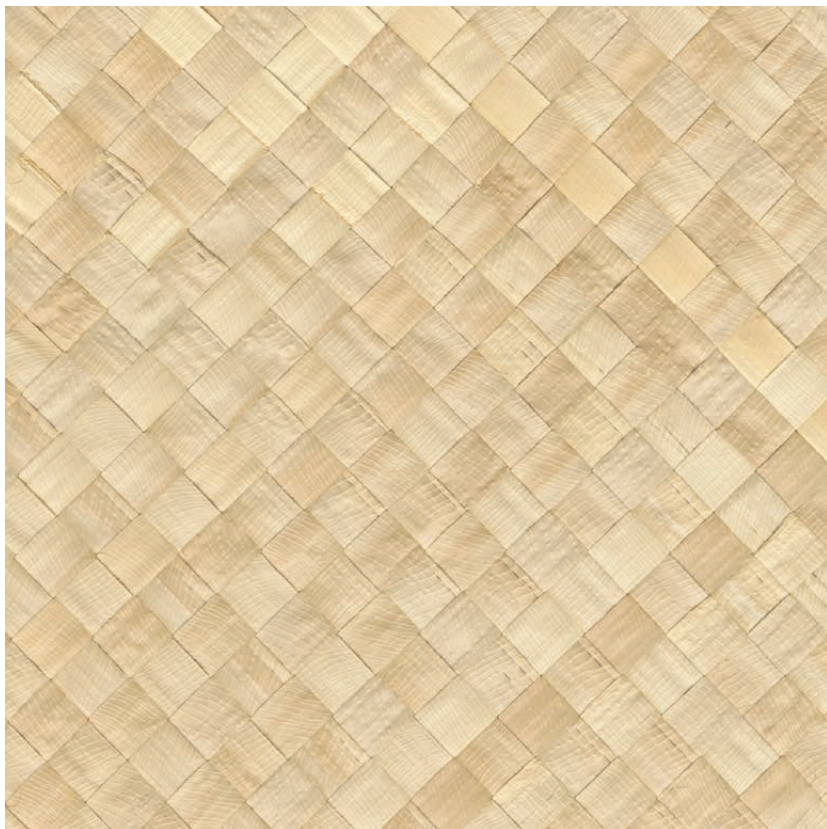


NAME

**BURI NATUREL**

REFERENCE

**CMO WPA 05 18**



ALL AVAILABLE COLORS



CMO WPA 05 20

CMO WPA 05 81

COLLECTION

**Botanical braid wallcovering**

COLLECTION'S HISTORY

An exquisite tribute to weaving, expressing the distinctive and tactile style of Japanese-inspired craftsmanship. Mats, checkered weaves and dual-material marquetry bring palm, bamboo and abaca to life in a unique way, subtly evoking shoji screens and kakemonos. Natural shades, as well as sumptuous blue and black, reveal the raw beauty of the fibres, magnified to perfection.

USEFUL WIDTH

Sold per roll 0.91 x 6.2 m  
(36" x 6.78 yards)

REMARKS

Colors can vary from each production

LEARN MORE

[Visit the website](#)

USE

**Wallcovering**

REPEAT

**Free match**

FIRE RATING

**Certificate on demand**

WEIGHT

**484 g (17 oz)**

COMPOSITION

**100% palm leaf on non woven backing**

VOC

**On demand**

MAXIMUM PIECE LENGHT

**Roll of 6.2 m (6.78 yards)**

CARE

**Avoid any contact with water, clean with a dry cloth**

PRODUCT COMMITMENTS

- ✎ Hand braided
- ✎ 1 day to make 3 meters
- ✎ Only the leaves are collected

BRAND COMMITMENTS

Our products support local crafting activities. We preserve unique know-how and help its transmission from one generation to the next. The plants offering their fibres are grown or harvested in harmony with their ecosystems.

CONTACT

CMO Paris  
38 rue Jacob, 75006 Paris  
01 40 20 45 98  
[contact@cmoparis.com](mailto:contact@cmoparis.com)  
[www.cmoparis.com](http://www.cmoparis.com)