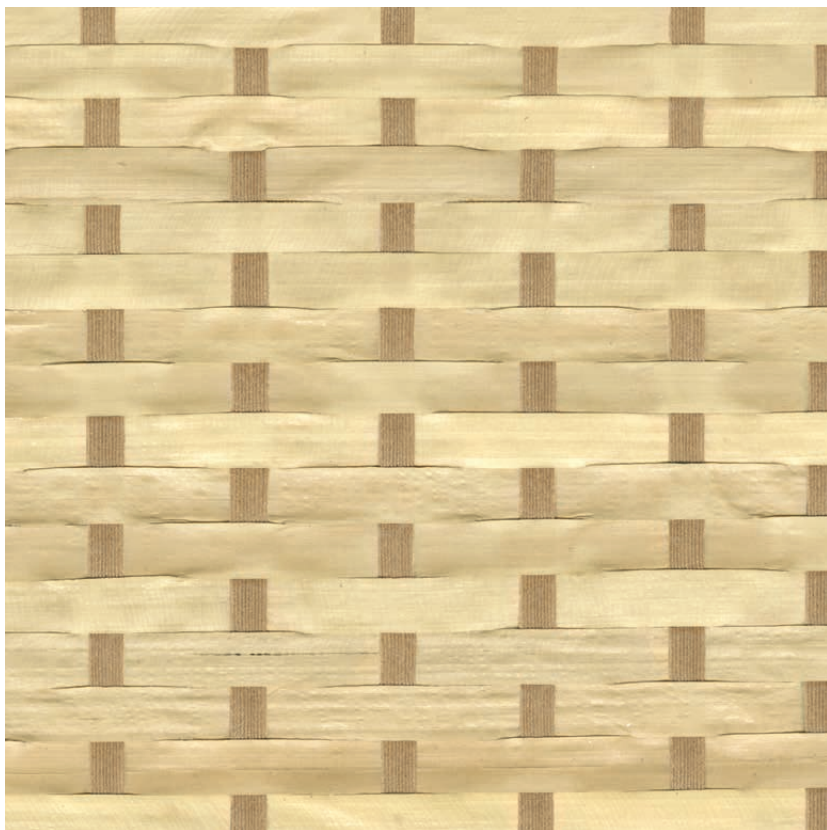


NAME

BURI TRESSÉ TAUPE

REFERENCE

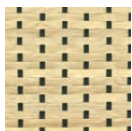
CMO WPA 09 74



ALL AVAILABLE COLORS



CMO WPA 09 10



CMO WPA 09 80

COLLECTION

Botanical braid wallcovering

COLLECTION'S HISTORY

An exquisite tribute to weaving, expressing the distinctive and tactile style of Japanese-inspired craftsmanship. Mats, checkered weaves and dual-material marquetry bring palm, bamboo and abaca to life in a unique way, subtly evoking shoji screens and kakemonos. Natural shades, as well as sumptuous blue and black, reveal the raw beauty of the fibres, magnified to perfection.

USEFUL WIDTH

Sold per meter, width 91 cm (36")

REMARKS

Colors can vary from each production

LEARN MORE

[Visit the website](#)

USE

Wallcovering

REPEAT

Free match

FIRE RATING

Certificate on demand

WEIGHT

378 g (13.3 oz)

COMPOSITION

100% pandan on non woven backing

VOC

On demand

CARE

Avoid any contact with water, clean with a dry cloth

PRODUCT COMMITMENTS

- ✎ Hand braided
- ✎ 1 day to make 3 meters
- ✎ Only the leaves are collected

BRAND COMMITMENTS

Our products support local crafting activities. We preserve unique know-how and help its transmission from one generation to the next. The plants offering their fibres are grown or harvested in harmony with their ecosystems.

CONTACT

CMO Paris
38 rue Jacob, 75006 Paris
01 40 20 45 98
contact@cmoparis.com
www.cmoparis.com